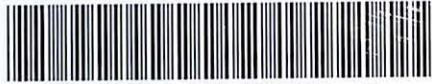
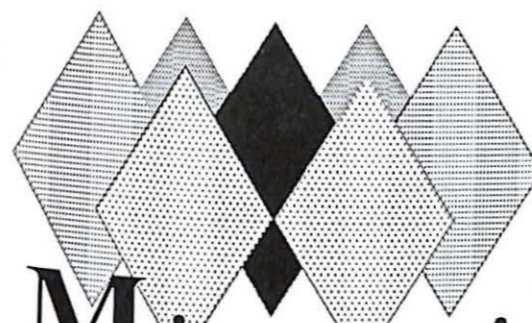


MISSOURI VALLEY COLLEGE



3 7010 00239776 4

hearts **&** MINDS



Missouri Valley College

presents

hearts & MINDS

Sabiduria 1989
a celebration of good times

Vol. LXXII

Table of Contents:

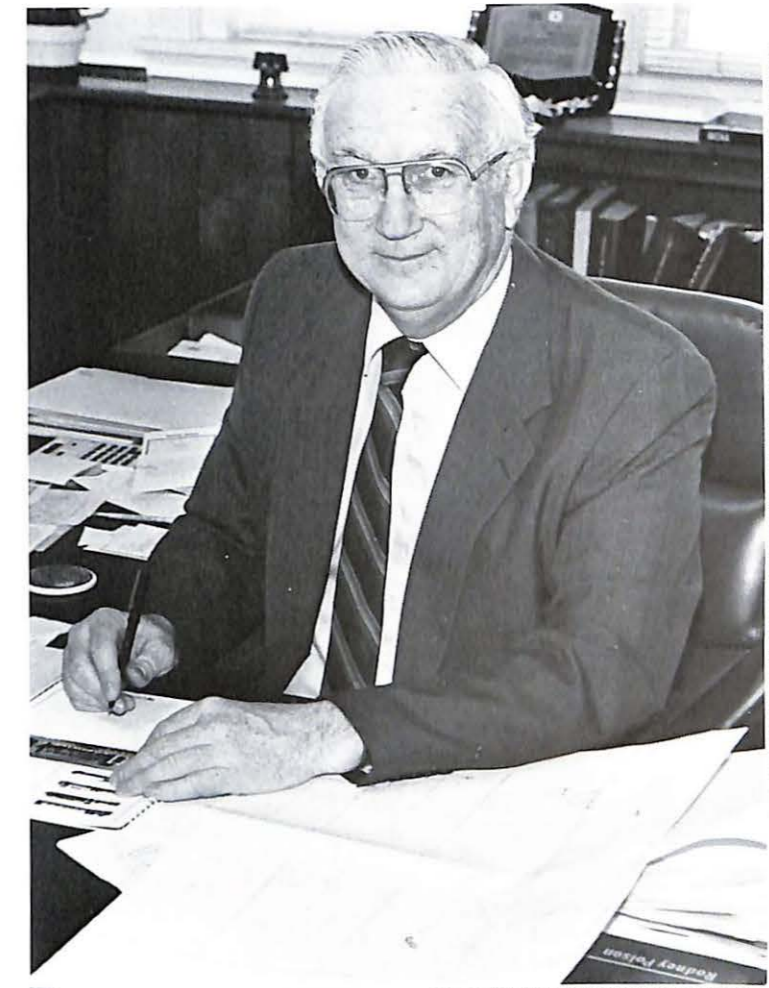
ALDS Club.....	48	Men's Soccer.....	28-29
Alpha Psi Beta.....	30	My Three Angels.....	32-33
Alpha Sigma Alpha.....	64	Newhard Hall.....	41
Alpha Sigma Phi.....	57	Open Studio.....	40
Alpha Xi Delta.....	59	Phi Beta Sigma.....	65
Alumni Weekend.....	126	Rock House.....	41
American Humanics.....	72	S-MSTA.....	89
Baccalaureate.....	127	SIFE.....	71
Baptist Student Union.....	38	Sigma Iota Gamma Nu (SIGN).....	88
Baseball.....	76-78	Sigma Nu.....	58
Blue Key.....	21	Sigma Sweethearts.....	65
Blood Drives.....	39	Sigma Tau Delta.....	21
Business Club.....	70	Sigma Zeta.....	20
Casino Night.....	45	Softball.....	79-81
Cheerleaders.....	19	Special Olympics.....	66-69
Children's Hour.....	44	Spring Concert.....	86-87
Christmas Concert.....	36-37	Spring Sports Banquet.....	84
Commuter Loungers.....	48	Student Recognition Banquet.....	85
Court warming.....	46	Students	
Dedication.....	4	Freshmen.....	106
Drama Jocks.....	73	Sophomores.....	113
Faculty.....	90-106	Juniors.....	117
Fall Sports Banquet.....	31	Seniors.....	122
Football.....	6-11	Summer '88.....	5
Gamma Sigma Sigma.....	38	TV Studio.....	20
Godspell.....	74-75	Tau Kappa Epsilon.....	56
Graduation.....	128-132	Track.....	82-83
Greek Week.....	60-63	V-Club.....	47
Hanging of the Greens.....	34-35	Volleyball.....	23-25
Hi-Tops.....	49	WVAO.....	47
Homecoming.....	14-18	Win, Lose or Draw.....	42
Intramural Football.....	22	Working.....	12-13
Introduction.....	3	Women's Basketball.....	53-55
Martin Luther King.....	43	Women's Soccer.....	26-27
Men's Basketball.....	50-52	Women's Tea.....	125

Reeves: Challenging MVC's hearts and minds

1988-89 was the last year of the first 100 years of the life of Missouri Valley College. As we prepare to celebrate our Centennial year, we can look back on a variety of exciting accomplishments in the past year.

Enrollment at Missouri Valley College passed the 1,000 mark for the first time in our history and I am proud of the quality as well as the quantity of our students. Both the Alcohol and Drug Studies and American Humanics programs have continued to grow and gain national recognition. The Teacher Education Program has been strengthened, and we have strengthened our liberal arts core requirements. Many of our athletic teams made playoffs this year and we continue to have a strong diversified sports program.

The highlight of the year was the One Million Dollar Challenge grant from the J. E. and L.E. Mabee Foundation, Inc., to help us build our



Dr. Earl J. Reeves
President, Missouri Valley College

long-awaited and greatly-needed multi-purpose athletic complex. As the year ended, we received the first major gift, \$250,000 from the Greater Kansas City Charitable Foundation, which was made possible by the Walton Family Charitable Support Foundation, Inc.

Thus, we finished our first century on a strong note. As we begin our second 100 years, we face exciting opportunities which will challenge the hearts and minds of all Vikings as we continue to build a strong and vital Missouri Valley College.

Dedication: 50 years of service

MVC lost in March one of its most ardent and loyal supporters-- Charles L. Bacon.

Mr. Bacon graduated from Missouri Valley College in 1930, then went on to graduate with honors from the University of Missouri Law School in 1934.

For 50 years, half of the life of MVC, Bacon served on the college's Board of Trustees. In 1962 he was presented an honorary Doctorate of Law from Missouri Valley.

A reception of more than 250 people was held at the Alameda Plaza Hotel in 1988 to honor Mr. Bacon's years of service. It was at this reception the Board of Trustees announced the Charles L. Bacon Award, which is presented each year to the graduating senior who best exemplifies service and commitment to the welfare of his or her college, community or country. The first two recipients of the award were Don Wolfe and Darrel Stogsdill.

Of the award, Mr. Bacon said, "It is hoped



Charles Bacon, MVC graduate and trustee

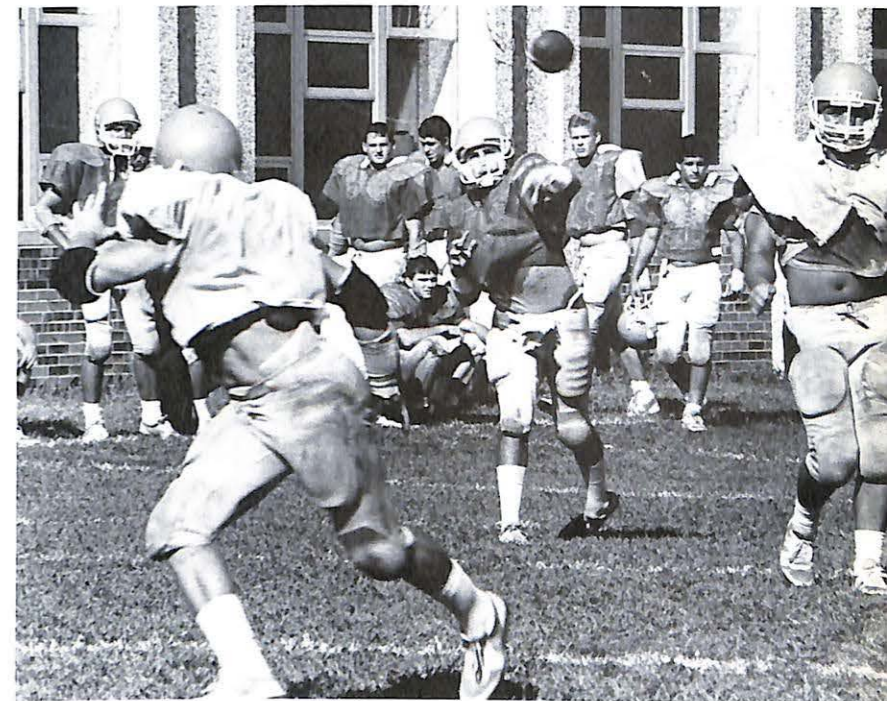
this awards will give even more meaning to one of the stated missions of Valley -- that its graduates will not only have the opportunity to achieve academic excellence, but will also be prepared to take a

socially responsible and productive part in the world of work."

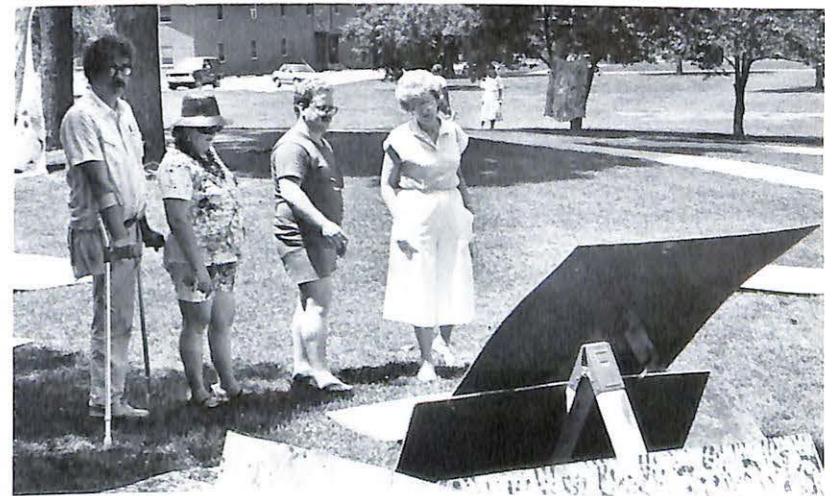
This 1988-89 edition of the Missouri Valley College yearbook is dedicated in the memory of Charles L. Bacon, Class of '30.

MVC doesn't take summer off

Summer was not a time of rest at MVC, especially not in 1988 as the college prepared to enter its centennial year. Students and faculty worked together to ensure the coming year would be the best in the school's 100-year history.



Clockwise from above: Luci Cheong works the switchboard; Melvin Edwards and Sean Burns discuss summer classes; the football team sweats through two-a-days; Mary Haas admires the work of students in Art 249, Spontaneous Painting; Marilyn Hinson helps Michelle Marshall enroll in fall classes.





Above: MVC Head Football Coach Ken Gibler.

Right: The Viking coaching staff (L-R), Reed Kepner, Jeff Steinle, Dan Kratzer, Gibler, Greg Purdum, Bob Thompson and Mike Doolan.

Below: Brian Clayton gains ground

Fall means football

Coach Kratzer summed up the season well at the fall sports banquet when he said it was an "almost" year. With a strong core of returning players, the Vikings took their shot at winning the conference, but suffered setbacks to Evangel and Baker to end their chance of a Heart of America Athletic Conference title. MVC finished in third place behind Evangel and Baker.

In April, Evangel was forced to forfeit its 11 wins and league crown because it used two ineligible players. The news gave MVC a 6-4 season mark, but came too late to help the Vikings.



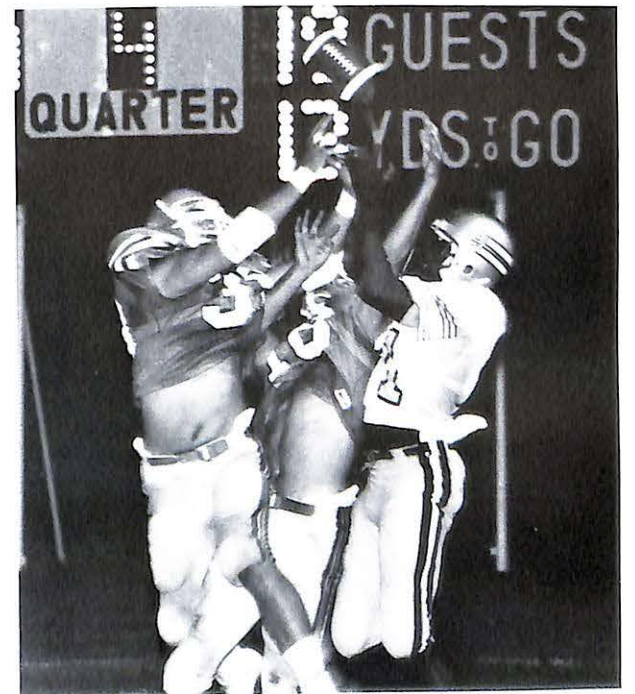
Missouri Valley placed four players on the all-HAAC first team. Mike Polk was named as a receiver, and also made the second team as a kick returner. Joining him on the first team were offensive lineman Tom Ledbetter, runningback Brian Clayton and linebacker Perry Morrow.

Named to the second team along with Polk were center Sam Richardson, defensive end Larry Taylor, linebacker Scott Tomc and defensive back Brian Woodfine.

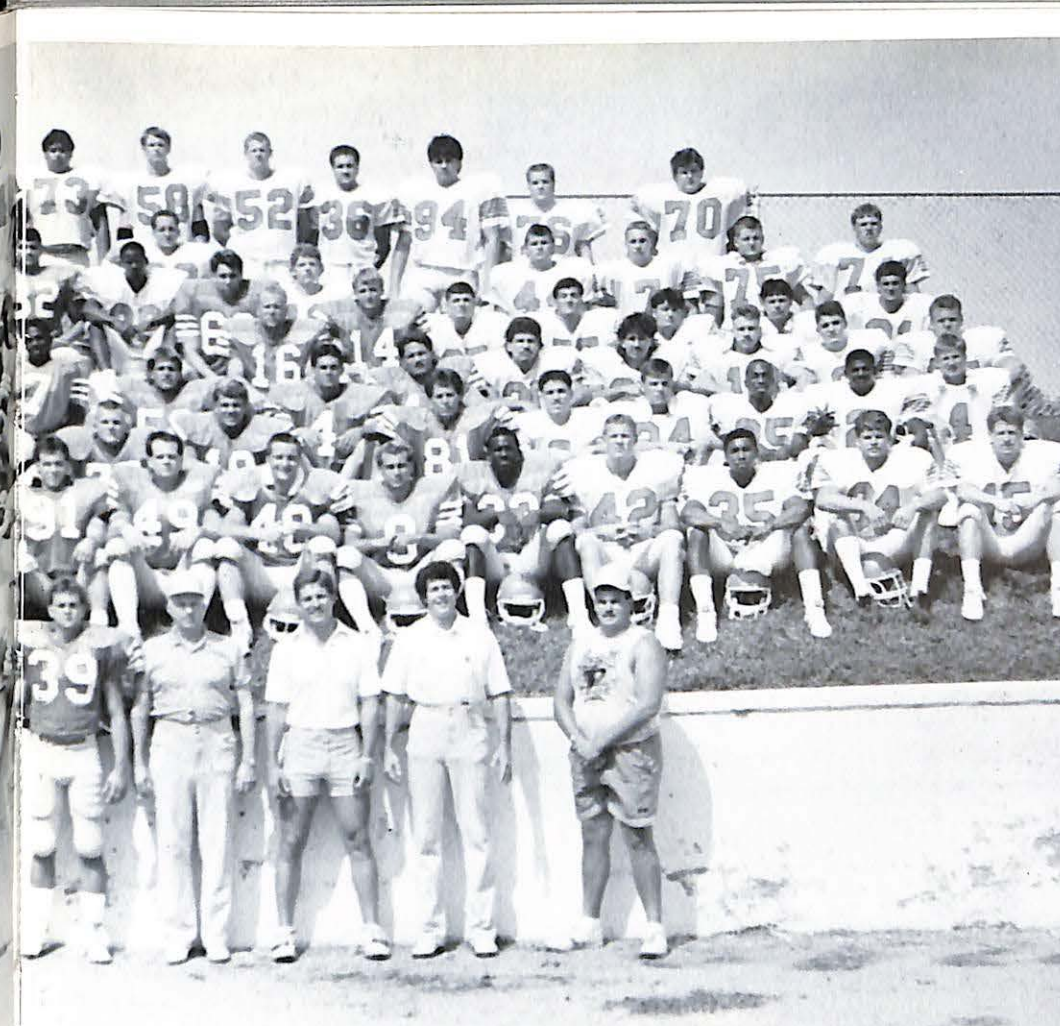
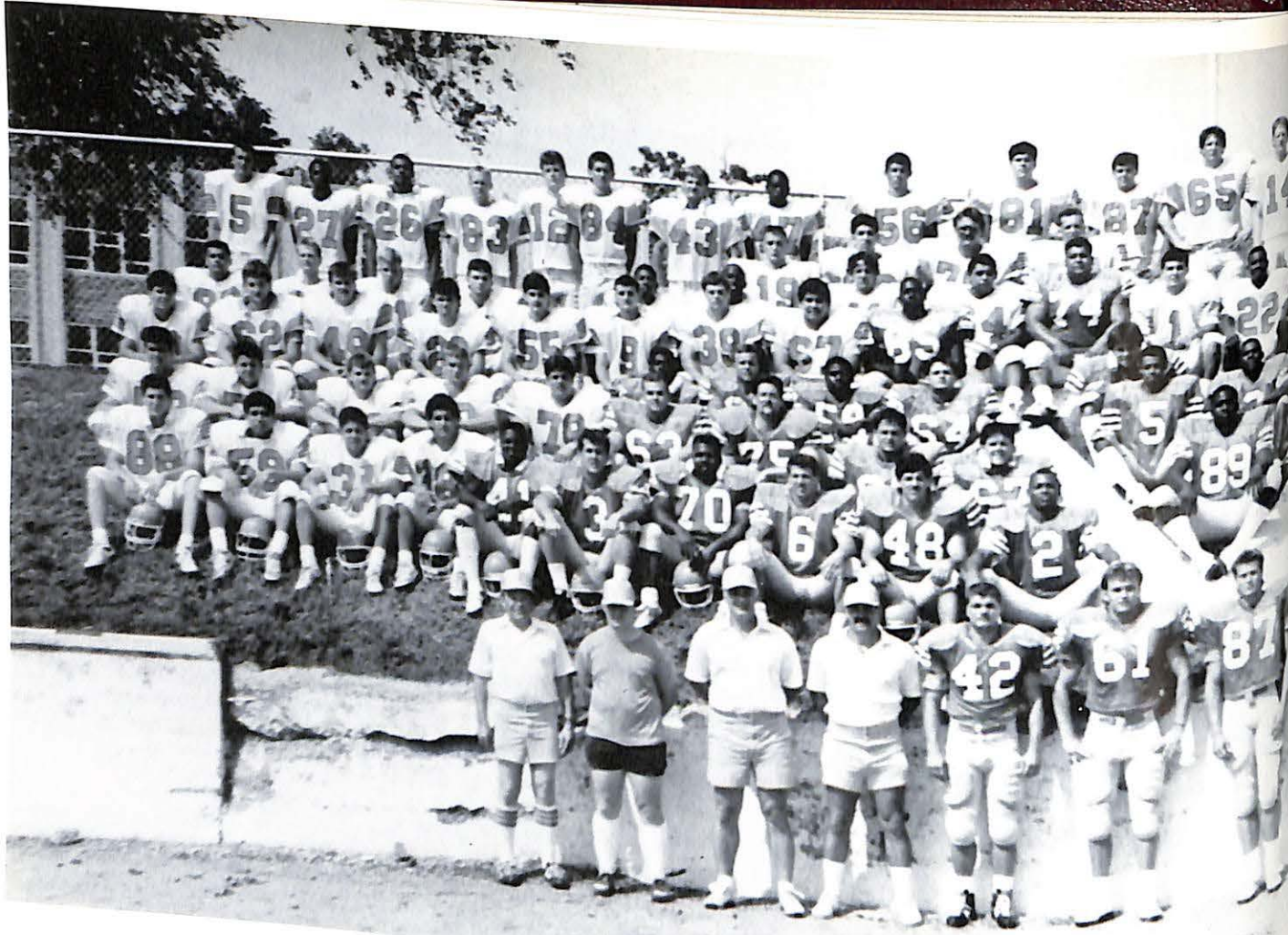
An all-district team wasn't named.

Named to the third team were offensive guard Tim Edwards and noseguard Todd Vaughn.

The Vikings lose three seniors -- Tomc, Ledbetter and Woodfine -- for the 1989 season.



Clockwise from above: Fred Lepper goes nose to nose with a Pioneer; Brian Clayton introduces himself to a Crusader; Brian Woodfine and Phil Kendall battle for an interception.



The 1988 Vikings

Fifty-five Viking gridgers lettered and a number ended the season by earning the following honors voted on by their teammates:

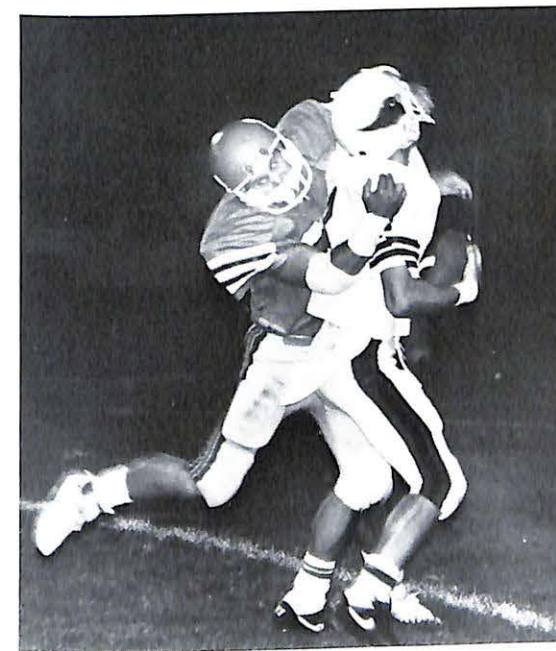
Todd Vaughn - Outstanding Defensive Lineman.

Perry Morrow - Outstanding Defensive Back.

Tom Ledbetter - Outstanding Offensive Lineman.

Brian Clayton - Outstanding Offensive Back.

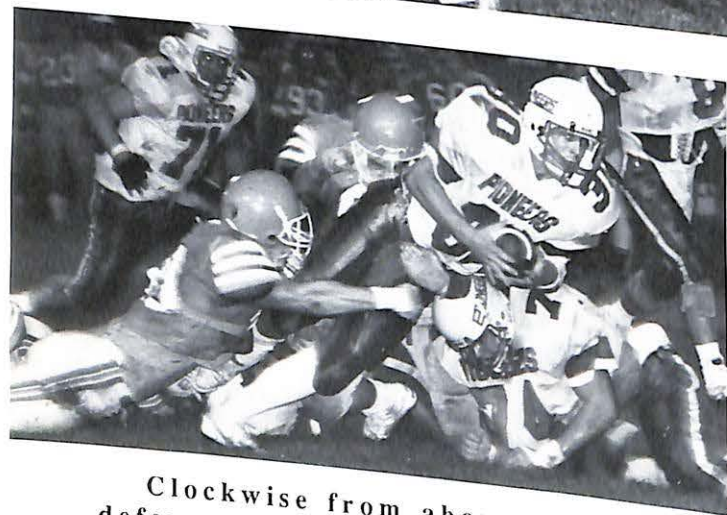
Tuli Fuimaono - Outstanding Newcomer.



Clockwise from left: Brad Drehle and Fred Lepper seem pleased; Mike Hedrick looks for a block; Lepper gives Brian Clayton a hand.

Clockwise from above: Brian Woodfine shows his tackling form; Coaches Gibler and Purdum confer with quarterback Brad Drehle; Coaches Kratzer and Thompson look over the opponents from the press-box.





Clockwise from above: The Viking defense stops a Mid-America gain; Scott Tome does the same against Evangel; Brad Drehle drops back against Baker; Mike Polk hears Crusader footsteps.

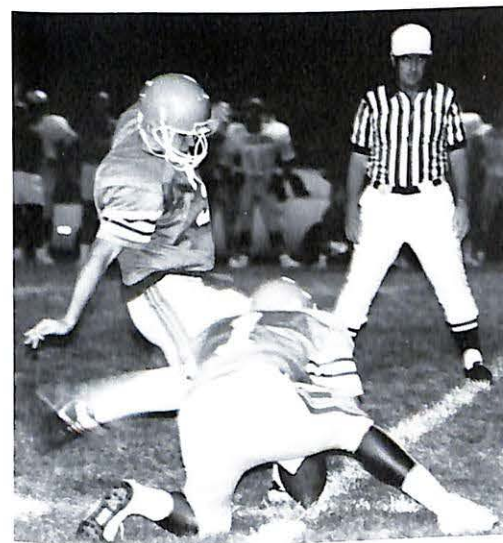


1988 Scores

MVC 21	Peru State	7
MVC 24	Evangel	* 34
MVC 20	SW Baptist	34
MVC 35	Tarkio	20
MVC 50	Mid-America	17
MVC 66	C-Stockton	13
MVC 17	Wm Jewell	10
MVC 25	Baker	31
MVC 0	Graceland	12
MVC 16	Benedictine	20

* Later forfeited

Clockwise from right: Drehle turns upfield; the Vikings celebrate; a Viking longboat greets the crowd; Todd Moore attempts a field goal.

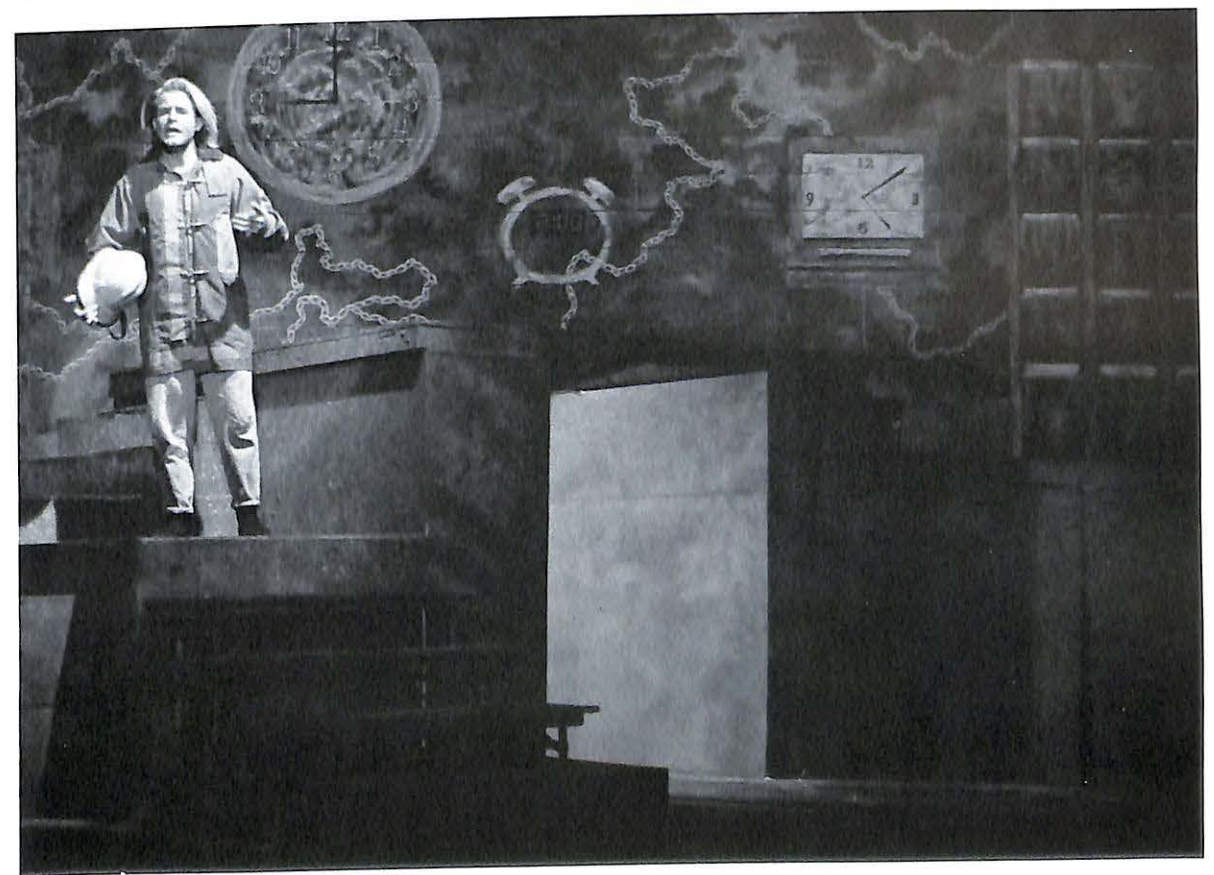


Vikings
go 6-4

Working takes fall stage

The theatre season opened October 8 with the MVC production of Studs Terkel's *Working*. The 40-member cast was the largest in the department's history. Musical numbers, written by artists such as James Taylor, came straight from the hearts and minds of American workers. Monologues and songs dramatized the working lives of steelworkers and seamen to corporate executives.

Rita Ludwig directed with Marilyn Hinson doing the choreography.



This page. Left: Amy Swiger, Missa Brown, Isela Uc, Jocelyn Bell and Cheri Wallmeier. Below: The cast of *Working* strikes a pose during rehearsal. Bottom: Amy Swiger, Aquetta Stewart and Gwen Barnes clean up as maids.

Opposite page, top: Cliff Lawson gives Shannon Sheldon his order. Bottom: Terry Hunter on being a fireman.



Dramatic Hearts

A Homecoming.

Mardi Gras

Under the direction of Homecoming Committee members Gigi Goesling, Martin Woody, Cedric Vinson and Al Williams, and Activities Director Linda Larberg, the 1988 Mardi Gras Homecoming was a successful splash of fall events for all of MVC's hearts and minds.



Clockwise from top: 1988 Homecoming Queen Lynn Laudel; the three senior candidates, Pam Hall, Kathy Enright and Laudel; the four queens, freshman Vicki Smith, junior Lisa Boone, Laudel and sophomore Genie Alvarado.



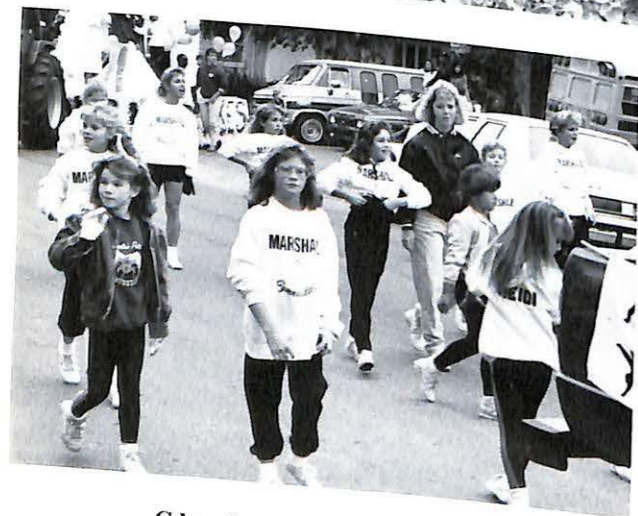
Clockwise from above: Carl Hutter, Marsha Lashley and John Guffey look on as Ken Bryant gets creamed; contestants in the root beer chugging contest; President Reeves sets alight the ceremonial bonfire.



Above: Torch runners, sitting (L-R): Tracey Johnson, Pam Workman and Carol Thienpont. Kneeling: Phil Sullivan, Mark Cauthern and Lisa Anderson. Standing: Pam Hall, Randy Barker, John Martinez, Ron Hughes and Jerry Albin.



From left: Martin Woody oversees the third place TKE float; the Shriners horse around; the MVC library float passes the reviewing stand; Linda Carder, reference librarian, flirts with the judges; Queen Lynn just waves.



Clockwise from above: Lisa Steidle leads the Marshall Gymnastics Academy; Dan Pyatt and Sharon Bolin-Polk ride the first place SN float; the AZD float had some youngsters aboard; the Alpha Sigma Phi float which took second.



MARDI GRAS



From left: Shantia Bost and Warren Paige trip the light fantastic; and so do Cheryl Williams and date; guests admire TKE school spirit; Barb Hartley passes her crown to Lynn Laudel; Scot Hildreth and Carla Carr get down.



Rah, Yeah MVC!

Top: Pat Welsh, Tracy Prier, Kay Johnson, Stephanie Lamb, Carmen Johnson and Vicki Smith ride in the Homecoming parade.

Above: The squad brings a football crowd to its feet.

Left: Stephanie Lamb asks, "How tall?"

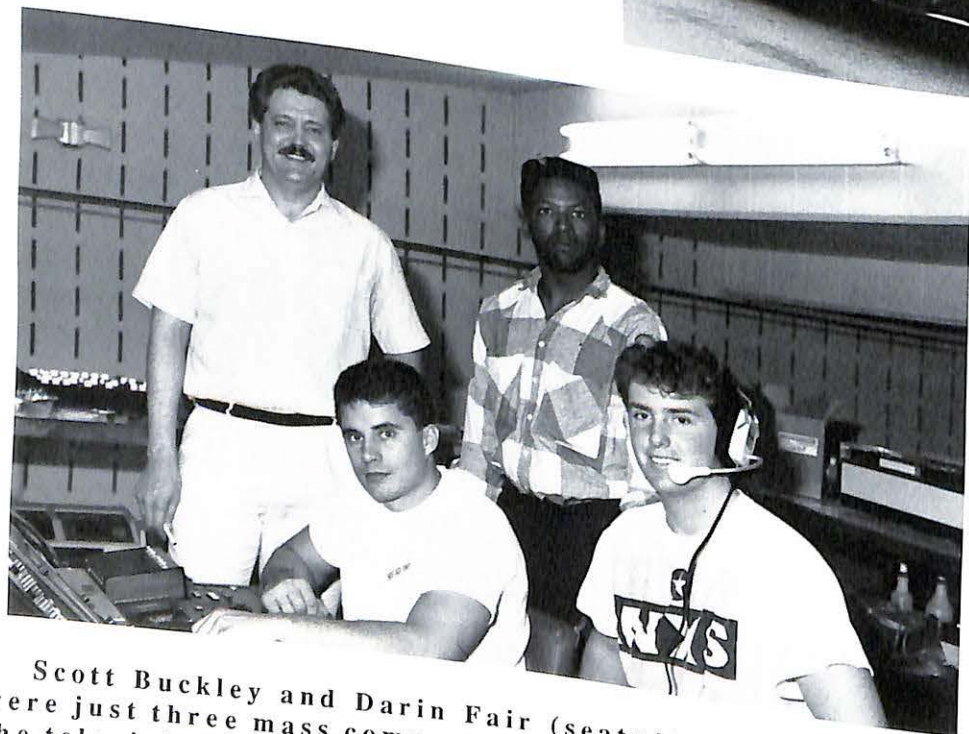


Cheerleader
Hearts



Sigma Zeta

Members of Sigma Zeta Science Club in 1988-89 are, seated (L-R): Connie Usnick, Shana Stillings, Steve Symes, David Byrd and Roy Adams. Standing: Advisor David Dautenhahn, John Gault, Bev Kempf, Deb Dirksen, Lynn Laudel and Ed Leslie.



Studio Crew

Scott Buckley and Darin Fair (seated) and Mike Ward were just three mass comm majors helping Mike Vande in the television studio in 1988-89. A few of those not shown are Didier Jean-Baptiste, Ron Jenkins, Jerome Thurmon, Rod Williams, Pam Workman, Roz Barnes, Evonne Taylor, Donna Walker, Shantia Bost, Natalie Paige and Tim Newman.



Sigma Tau Delta

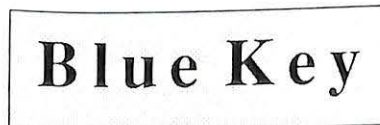


Above: Paulina Batterson speaks to students on pioneers in higher education for women.

Two honoraries, Sigma Tau Delta and Blue Key, returned to MVC this year after short periods of inactivity.

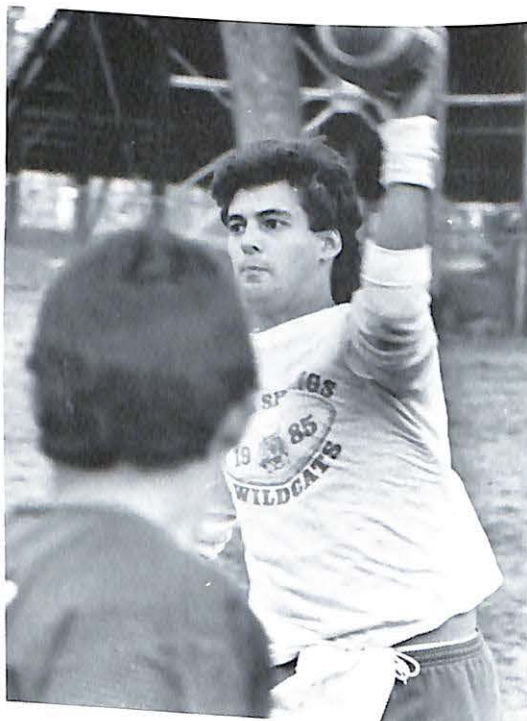
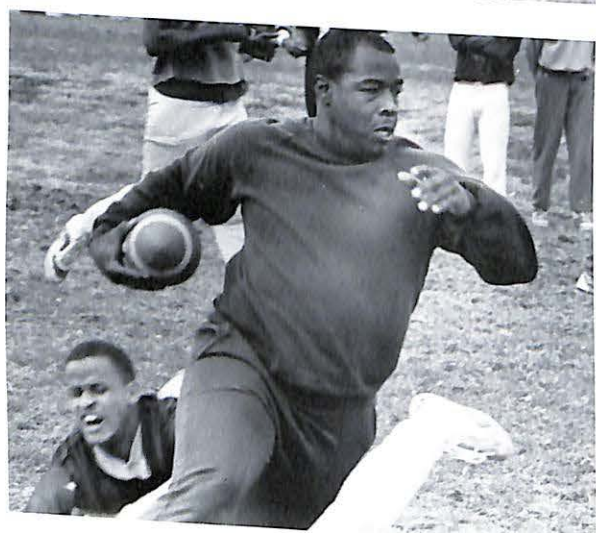
Above: Members of STD, English honorary are (front to back) Connie Vaught, Sarah Bryson, Jodi Arni, Robin Adkison, Bethany Weiker and sponsor John McCallum.

Below: Members of Blue Key, a national honor fraternity, are, first row (L-R): Rhonda Peery, Rhonda Dodson, Debbie Lock and Jodi Arni. Second row: Connie Usnick, Dana Markey and Sarah Bryson. Third row: Billy Rutledge, John McCallum, Janet Moore and Kevin Maroney.



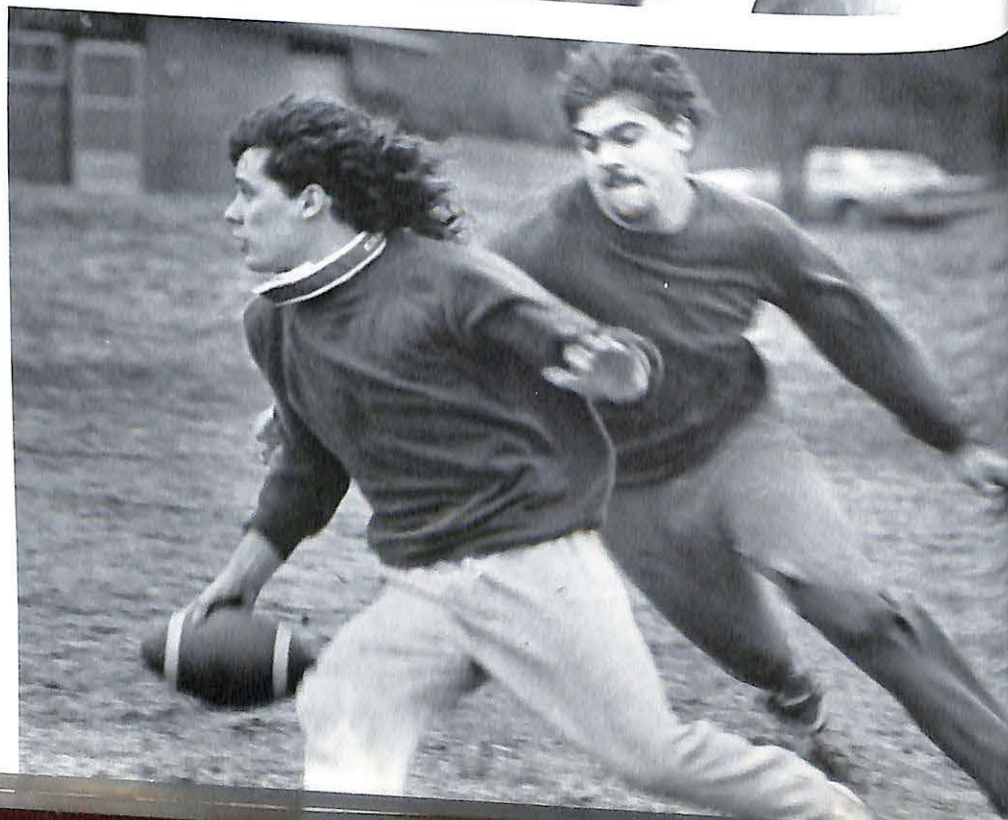
Blue Key





Football begins competitive IM year

Clockwise from top: TKE little sisters cheer on their brothers; Jerome Thurmon celebrates his touchdown with 2nd floor Young teammates; Shane Voyles goes long; Sigma Nu's Guy Capparelli avoids TKE's Jeff Watson; James Willingham, 1st Young, stretches it out.



Final team standings

- TKE 500
- Sigma Nu 300
- Young 1st 275
- Young 3rd 250
- Moreland 1st 225
- Honors/Casebolt 200
- Moreland 3rd 200
- Alpha Sig 100
- Faculty 100
- Non-traditional 100
- Young 2nd 100
- MacDonald 100

Top: Shane Voyles tosses a pass.

Left: Tim Charles launches a return in 2-on-2 volleyball.



The 1988 MVC Viking volleyball squad.

23-16 is best season yet for Gibler

"Our record shows the improvement and so does the caliber of our play," coach Vickie Gibler said after her young volleyball squad finished a 23-16 campaign.

In the conference

tournament Valley beat Evangel, Mid-America and William Jewell to finish fifth.

Season highlights for the spikers included home victories over Avila and a ranked School of the Ozarks

squad.

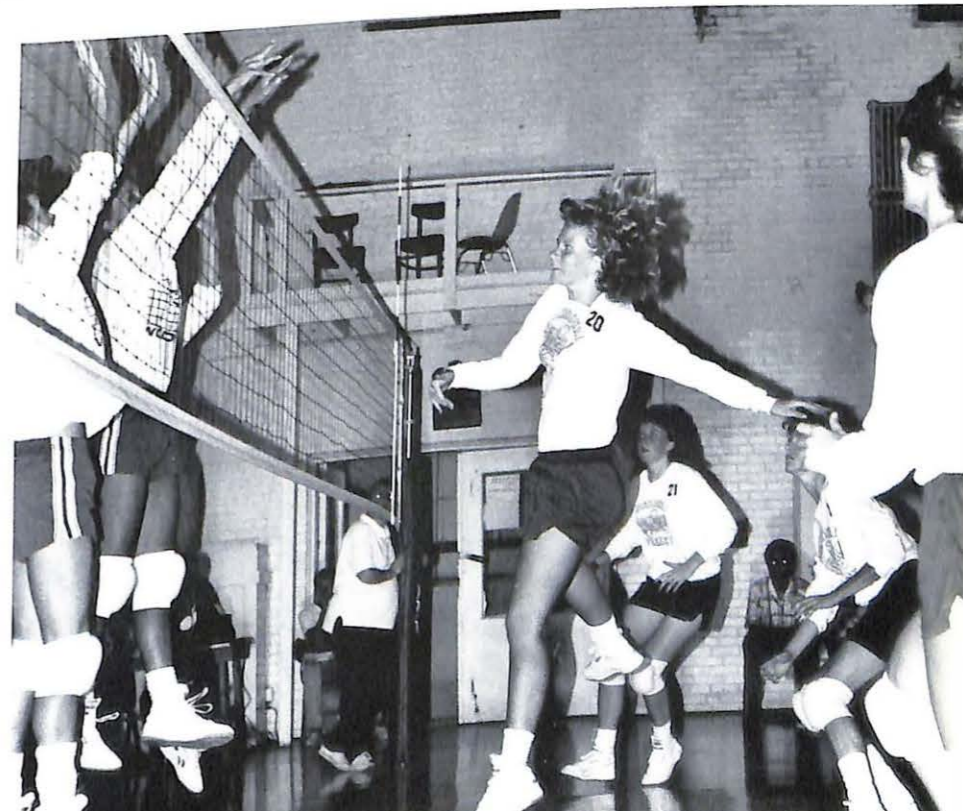
"It was an enjoyable, successful and, I think, extremely positive season. I'm proud of the women for their season. If they continue to work, we have no choice but to improve," Gibler said.



Above: Kelly Murphy attempts a save.
Right: Susan Artkras and Yolanda Beasley exchange a low five.



From top left: Carol Dillon bumps it to the front; Sheryl Chrisco spikes it home; a between-point pep talk; Becky Hazelwood spikes it with a smile.



Spiked
Hearts



Clockwise from below: Kathy Einerson pushes the ball past her opponent; fullback Lynn Laudel races for a loose ball; midfielder Susie Jones clears the ball out of danger; forward Terri Lansing puts a move on her defender; forward Katie O'Dowd applies pressure; Jones slides into an opponent.



From above: loyal Valley soccer supporters; forward Dawn Kirk on defense; Enright battles for the ball.



Women build foundation

MVC's women's soccer team, for the third year in a row, travelled to the District 16 tournament. Unfortunately, the ladies lost in their attempt to defend the title they won last year. They fell 2-1 to Lindenwood in the final.

First year coach John Guffey was positive, however, saying that with a young team MVC was building the foundations of a strong program.

All region first team mention went to Enright, with Boone and O'Dowd on the second. Enright, Jones and Yvette Franco were first team all-district, with O'Dowd, Kathy Murray, Kathy Einerson and Terri Lansing copping second team notice. Boone and Dawn Kirk earned honorable mention.

Jones was voted the team's most valuable player; Murray most valuable offensive player; Franco most valuable defender; and Jones and manager Sharon Morrow shared the 110 percent award. Tri-captains of the 11-6-2 squad were Boone, Enright and Laudel.



The 1988 Missouri Valley College women's soccer team.



From below: forward Jay Stevens challenges an opponent; midfielder Tim Kappler gets bumped from behind; forward Jamie Murphy and Kappler team up on an opponent; fullback Nick Steffen takes the ball upfield; Murphy battles for the ball in a crowd.



Opposite page from lower right: Kappler works on an opponent; teammates gather to celebrate a goal; fullback Jeff Ochs gets up to control the ball.



The 1988 Missouri Valley men's soccer team.

Vikings make strides

This year's var-

sity men's soccer team made great strides under new head coach Carl Hutter. It made its first playoff appearance since the start of the program just three years ago, finished second in the conference with a 3-0-2 record, and bettered its overall season record from past seasons to 8-11-2.

Junior forward Carlos Guimbarda scored a record 11 goals on the season and freshman midfielder Tim Kappler had a team record 15 assists.

All-conference selections were first team Guimbarda and Kappler, second team junior Jerry Bruce, sophomore Jamie Murphy, and freshman Craig Kirsch. Guimbarda was named best offensive player; Kirsch best defensive player; Murphy 110 percent; and Jay Stevens most improved.





From left: Tom Ledbetter, Scott Tomc and Brian Woodfine, the three senior football players, are recognized; Patrick Lewis congratulates Brian Clayton; Kathy Enright looks on; the men's soccer lettermen are announced; Ledbetter picks up his offensive lineman award.



Fall athletes honored in November

Five Viking athletic teams honored their athletes at the fall sports banquet. Football and soccer awards may be found elsewhere, but volleyball and cross country awards were also presented.

Cross country coach Ed Leslie noted the fine performance of freshman Ed Robles, who finished 62nd out of 350 runners in the NAIA national meet (9th of all freshmen).

He, along with Joe Burks and Mike Sewell lettered.

For the spikers, Pam Adams was named MVP; Carrie Lawn most im-

proved; Laura Schneider most inspirational, and Becky Hazelwood and Carol Dillon co-captains.



ΑΨΒ

Alpha Psi Beta

Left: A few members of Alpha Psi Beta. Sitting (L-R): Eugene Jones, Jimmie Watkins and Emanuel Walker. Standing: Alexis Primm, Tyrone Clay, Ron Jenkins and Clarence Oliver.

Above and below: Members wash cars to raise money for a Homecoming dance.





The play required a steamy tropical climate, giving the play's property and technical crews a challenge.

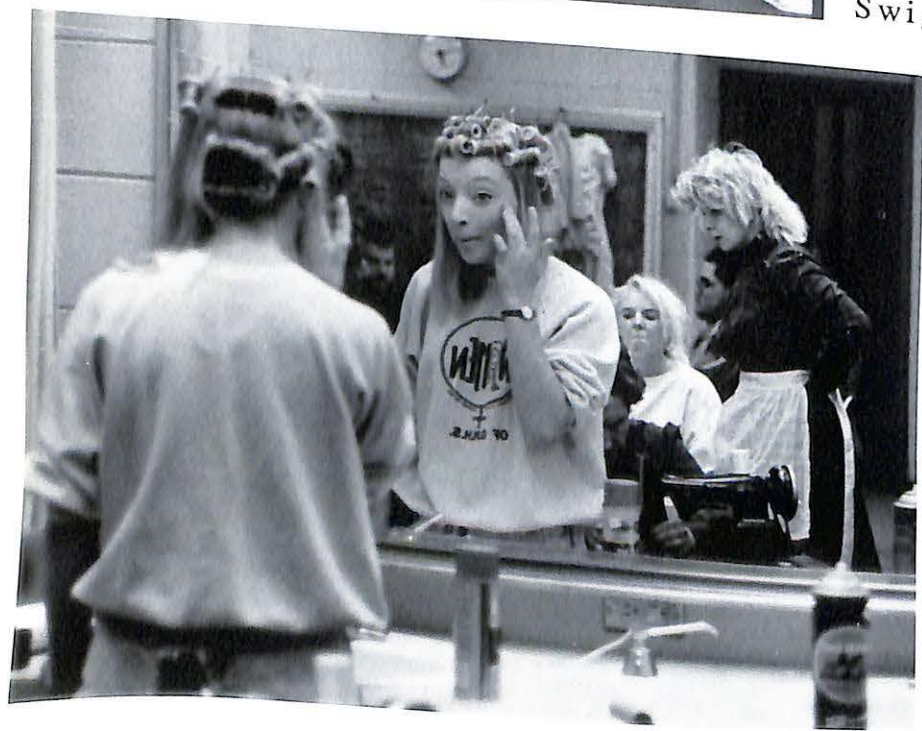
The show opened Nov. 19, but all involved were working day and night for six weeks before an audience entered the doors of Mabee Chapel.

"You must be willing to give your heart and soul to the theatre," Taft said.



My Three Angels closes fall season

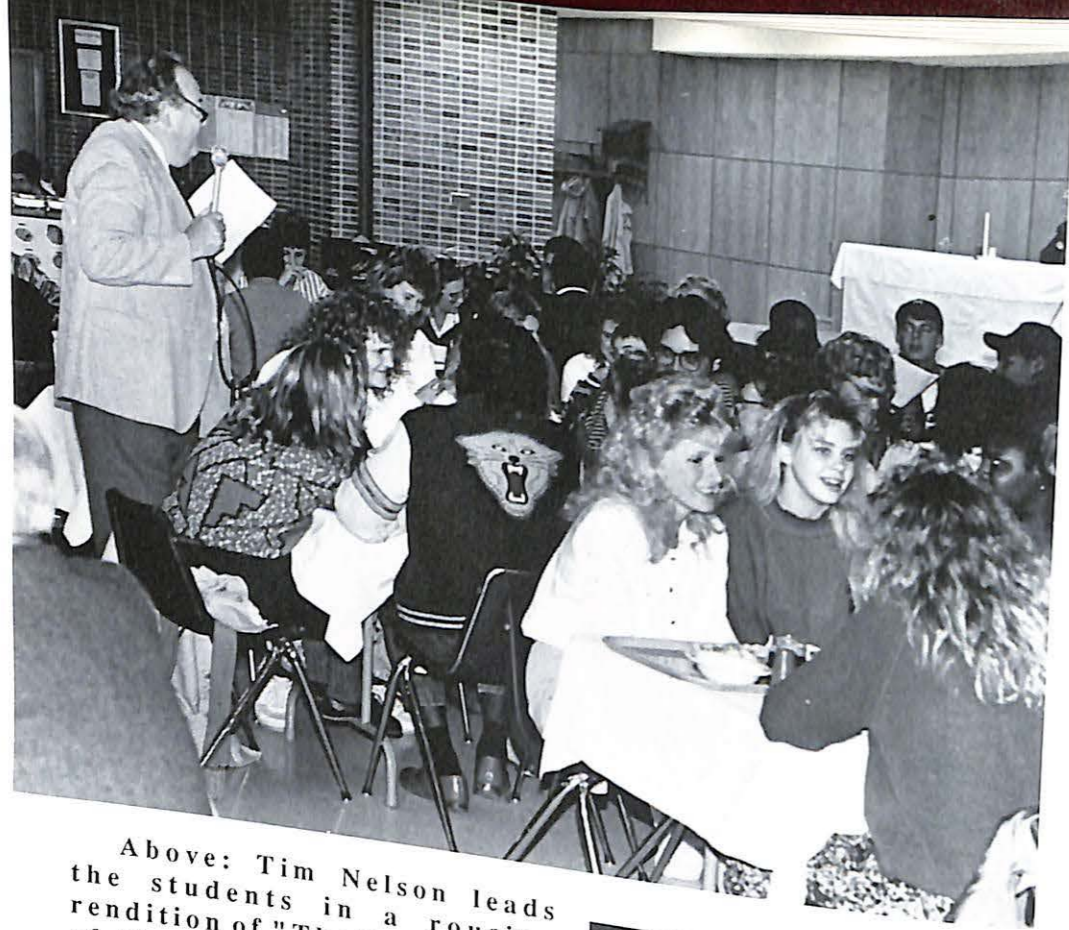
Title roles went to Martin Woody, Scott Bridges and Anthony Blake in this three-act comedy directed by Steve Taft. These angels, (convicts), came to the aid of Corbin Gill, Carole Dawn Arrendale and Cheri Wallmeier. Also featured were Cliff Lawson, Greg Bell, Amy Swiger and Terry Hunter.



Audiences don't see the hours of rehearsal and work that go on before the curtain rises. From top left: Corbin Gill, Greg Bell and Martin Woody work out a scene; Anthony Blake gets made up; Cheri Wallmeier puts on the finishing touches to her makeup; Taft works with the angels on their entrance.

Opposite page: three scenes from "My Three Angels" and the cast, responding to the audience's applause, takes a bow, ending weeks of hard work.





Above: Tim Nelson leads the students in a rousing rendition of "The Twelve Days of Christmas."

Right: Can you sing "Five golden rings," with feeling?
Below: Dr. Nelson solicits some audience participation.

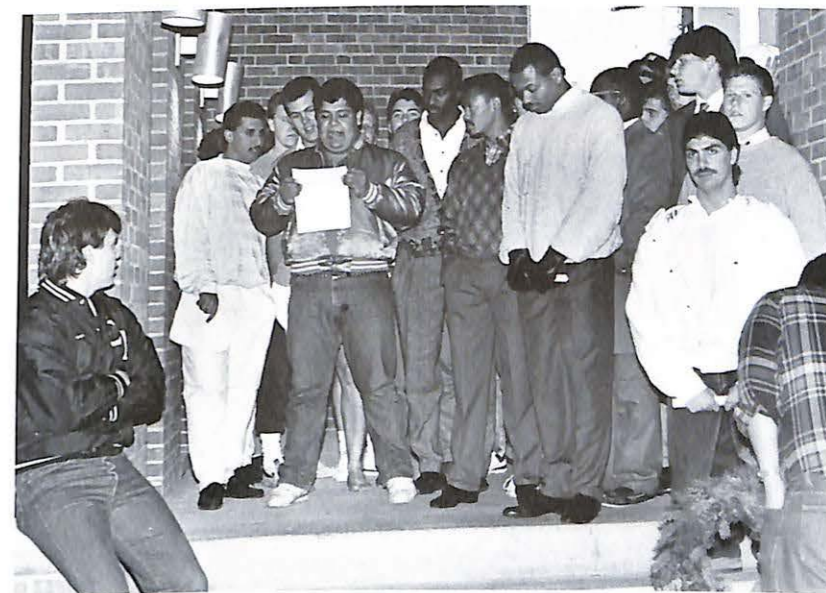


Christmas tradition continues

For 16 years the Christmas banquet and Hanging of the Greens has been an MVC tradition. This year, as always, Valley's hearts and minds filled with joy of the coming season.



From above: the men of Young Hall accept their Christmas wreath; Armando Garza provides a reading from the men of Sigma Nu; carolers fill the night with music; Sam Richardson accepts a wreath for TKE.





From left: Erin Hennessy solos on "The Christmas Song"; Shana Stillings, Megan Duchinsky, Jodi Arni, Michelle Orndorff and Robbie Ludy sign; the Show Choir gets a closer look at the audience; Rod Williams gets backing from Martin Woody, Anthony Blake and Don Baldwin.



An MVC kind 'a Christmas

All three Valley night a decidedly MVC kind of Christmas. Under the direction of Diana Malan, Steve Taft and Marilyn Hinson, Mabee Chapel was filled with holiday song and dance.



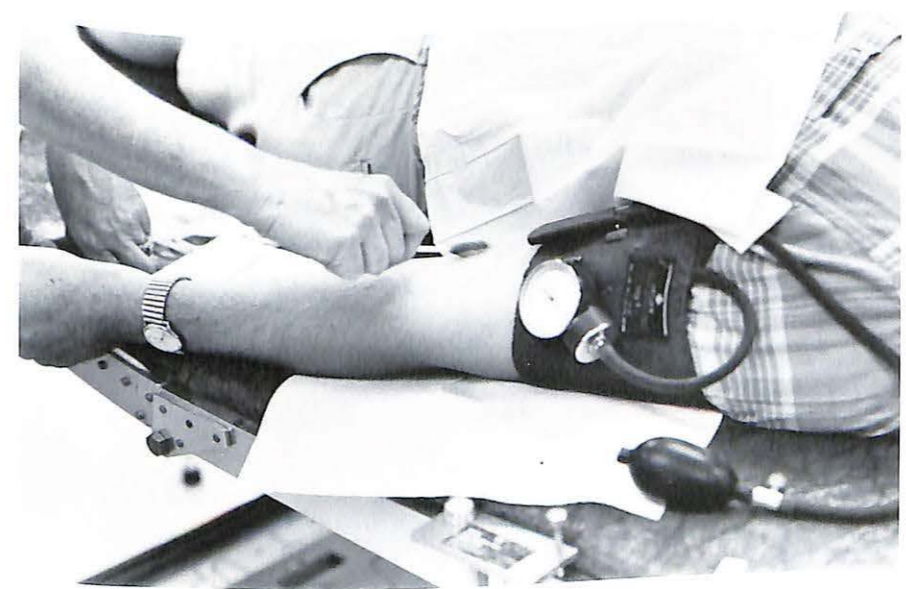
From top: Charla Morrow leads the Gospel Singers; Debbie Bivens solos; as does Aquetta Stewart; the A Cappella Choir.



ΓΣΣ

Gamma Sigma Sigma

Members of Gamma Sigma Sigma honor sorority are, first row (L-R): Shana Stillings, Bev Lamke, Megan Duchinsky and Bethany Helmich. Second row: Kim Camp-Faucz, Paula Martin and Karen Sullivan. Third row: Nancy Knapp, Tara Goslik and Becky Hutson. Fourth row: Lisa Anderson, Jennifer Hight and sponsor Gayle McKinney.



In two on-campus blood drives, MVC students and faculty provided the Greater Kansas City Blood Bank with 93 pints of blood.

From top: Lori Wag-
 oner tries not to wince;
 volunteers watch over
 the donors; just before
 the needle enters; Scott
 Bridges reads up on do-
 nating blood.

Giving
 Hearts

BSU

Baptist Student Union

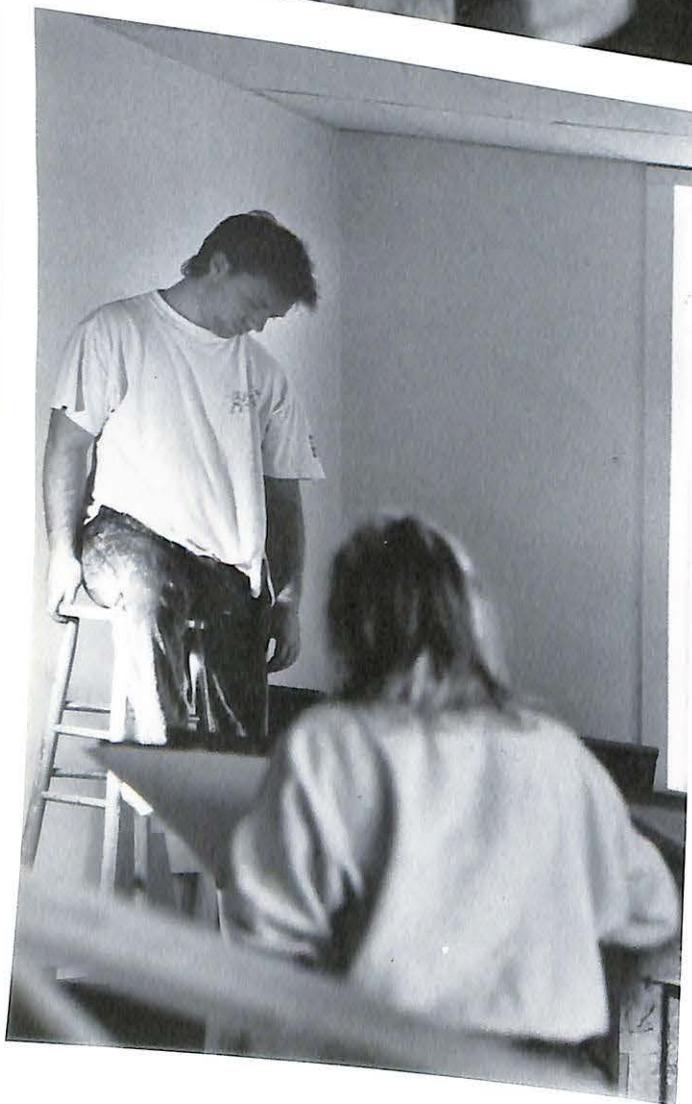
Members of MVC's chapter of Baptist Student Union are, sitting (L-R): Nancy Knapp and Sheri Kane. Standing: Kevin McKinley, John Gault and Kyle Guimon.





Rock House

Residents of Rock House are, (clockwise from bottom left): D'Arcy Miller, Carole Dawn Arrendale, Dana Gottman, Audrey Crisp, Nancy Weeks and Sarah Mudd.



Open Studio

From top: Joe Deyaeghere, Stephanie Lamb and Beth Byrd study the human figure in an open art studio; Byrd checks out Lamb's interpretation; Deyaeghere strikes a pose.

Artistic Minds



Newhard Hall

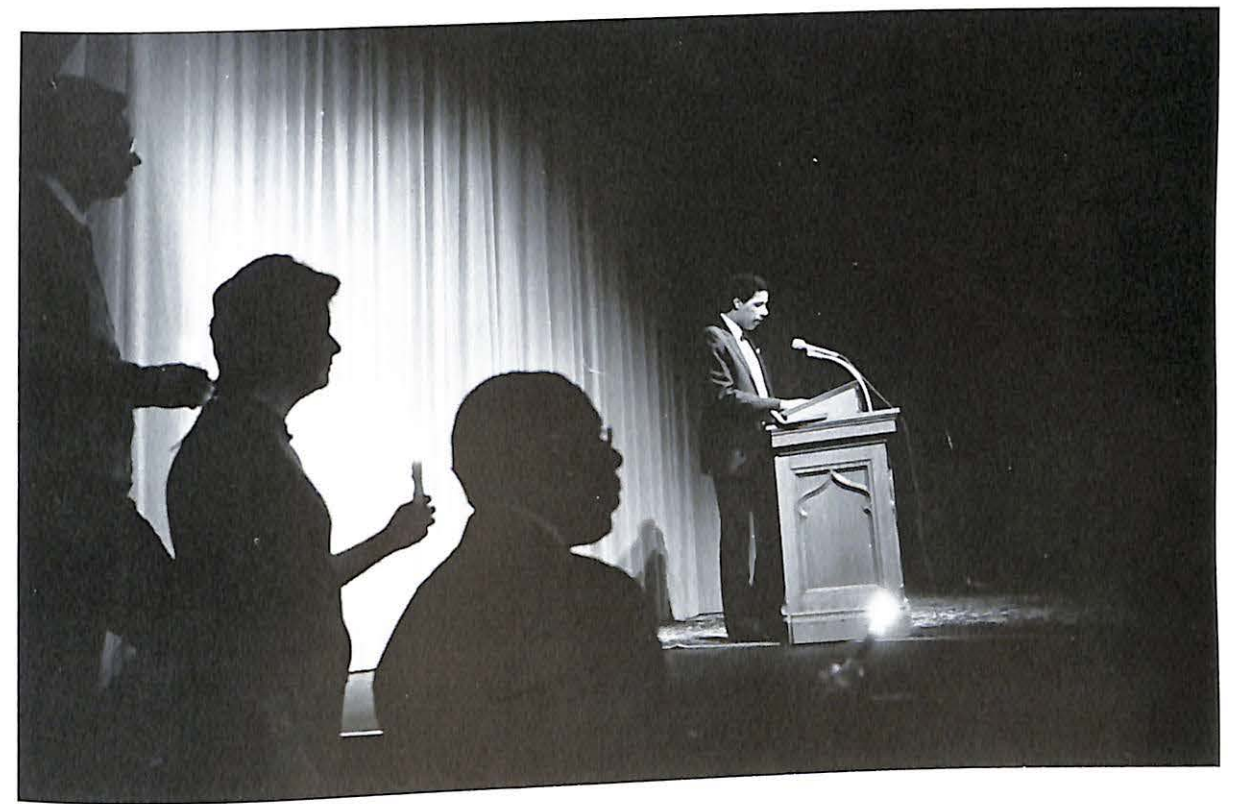
Residents of Newhard Hall are, first row (L-R): David Dixon, Nick Fosnacht and Larry McDowell. Second row: Ed White, Mike Goodin, Curt Cunningham and Darrell Moore. Third row: Ronnell Clay, Larrie Mann and Melvin Edwards.



Win, Lose or Draw



To keep things going over interterm, Student Life sponsored a Win, Lose or Draw competition. From above: Eric Johnson seems frustrated; Vicki Smith looks to Curt Cunningham for help; Cheryl and Carol Thienpont, WLD winners with Julie Everhart, celebrate; all eyes are on Suzi Ellis.



Martin Luther King's Birthday observed

January 16 was the date for the third annual MVC observation of Martin Luther King's Birthday, giving students a chance to honor the man who freed hearts and minds everywhere.



From top: Bert Randolph brings the evening to a close; Gwen Barnes raises her voice in song; Aquetta Stewart lends her talents to the program; Larry Bradshaw makes a presentation.



The Children's Hour provides drama

What happens when a lie gets out of control?

That was the question answered by "The Children's Hour," a three-act drama directed by Rita Ludwig and Marilyn Hinson.

Lead roles went to Tracy Tettaton, Steph-

any Miller, Tara Goslik, Joe Deyaeghere, Sherrie Goodwin, Simone Lawson, Elaine Harris and Erin Hennessy. Also

landing parts were Carole Dawn Arrendale, Shannon Sheldon, Missa Brown, Alicia Sears, Melissa Westfall Jennifer Farris and David Bower.



From top: the children study; Tara Goslik tries to get in good with her grandmother, Sherrie Goodwin; Tracy Tettaton and Stephanie Miller; Elaine Harris takes offense at Miller's accusation.



From top: Diana Malan minds the big wheel; Terri Lansing and Sharon Marrow are big winners; Pam Workman, Jackie Downing and Sandy Sillers play auctioneer; Marsha Lashley and Sillers toast Casino Night's success.

Bet on Casino Night

Casino Night was again a big success as students gambled with play money to purchase a number of items donated by local businesses. All that while collecting food for local families. The event was sponsored by the Office of Student Life.

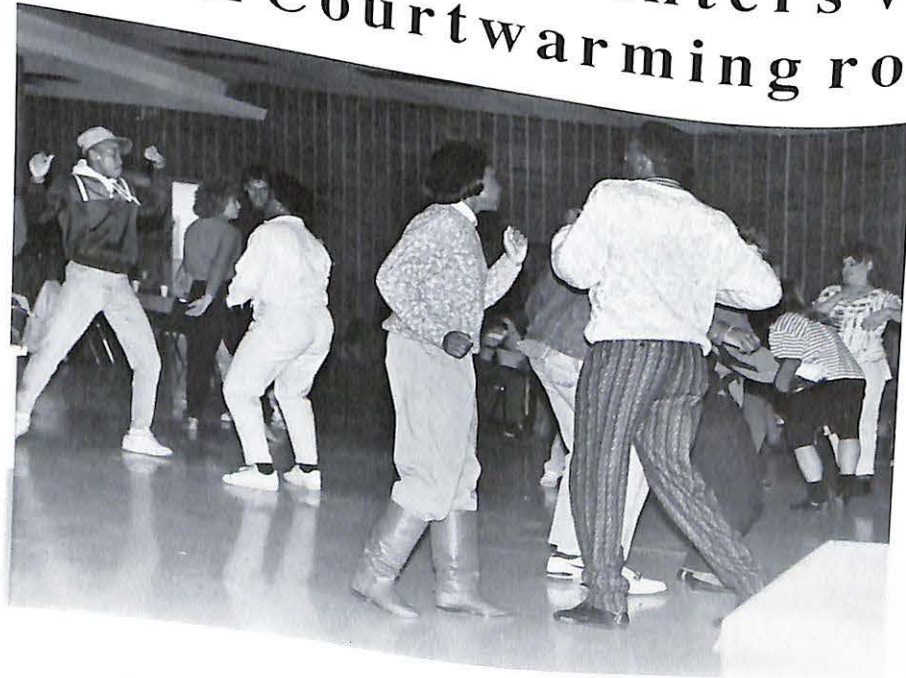




From left: King candidates Charlie Hartung, Doug Winters and Tom Ledbetter; queen candidates Kathy Enright, Lisa Boone and Jackie Downing; the after-game dance; King Winters and Queen Boone.



Boone, Winters voted Courtwarming royalty



Women's Varsity Athletic Organization

WVAO



Above. Members of the Women's Varsity Athletic Organization are, seated (L-R): Kim Leatherman, Angie Smith, Yolanda Beasley, Sheryl Chrisco, Dee Holman and Renee Krewson. Standing: Kendra Barton, Kelly Murphy, Jackie Downing, Becky Palmer, Carol Dillon, Pam Adams, Janet Moore, Jeanna Patton, Alicia Smith, Dawn Wheeler and Becky Hazelwood.

Right: Jeanna Patton.



Left: Tom Ledbetter accepts the Mr. Viking Award. Darrel Stogsdill is runner-up.

Above: V-Club members are, sitting (L-R): Larry Taylor, Stogsdill, Ledbetter, Gary Taylor. Standing: Brian Clayton, Mike Hedrick, Sam Richardson, Farrell Shelton and Brad Drehle.

V-Club

ALDS Club



Members of ALDS Club are, kneeling (L-R): Ronnell Clay, Joel Marcus, Dave Otti and D'Arcy Miller. Second row: Stephanie Wilson, Bob Enderle, LuAnn Sherbeck, JoAnn McCoy, Kelli Pinkston, Elaine Carey, Joy Lovett, Linny Houston, Jennifer Walker and Audrey Crisp. Back row: Darrell Moore, Dr. Robert Jones, Ed White, Caroline Ray, Curt Cunningham, Larrie Mann, George Smith, Wayne Hill and Larry Farrell.

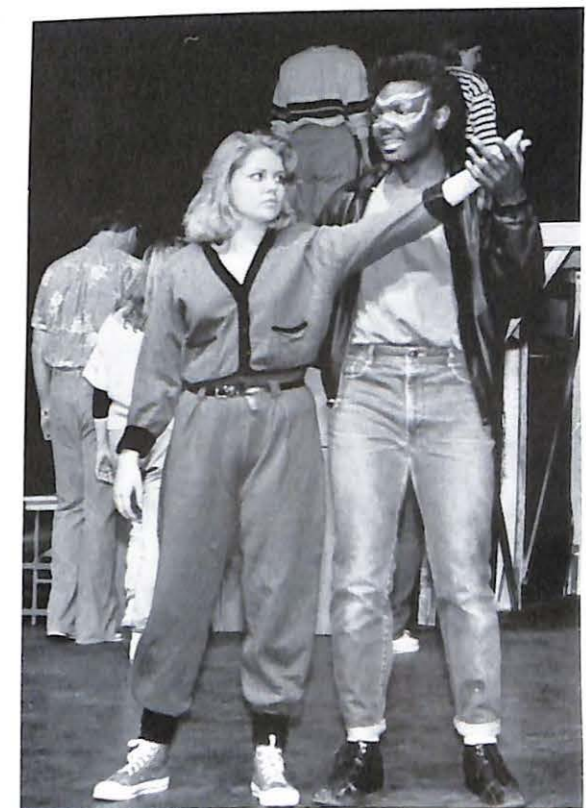
Commuter Loungers



Regulars in the Baity Hall commuter lounge are, front (L-R): Pat Cobb, Beth Button, Christy Pace, Marsha Wallen and Susan Hughes. Back: John Watson, Wayne Ogle, Cathy Pierce, Jim Huesgen and Linda Shepherd.

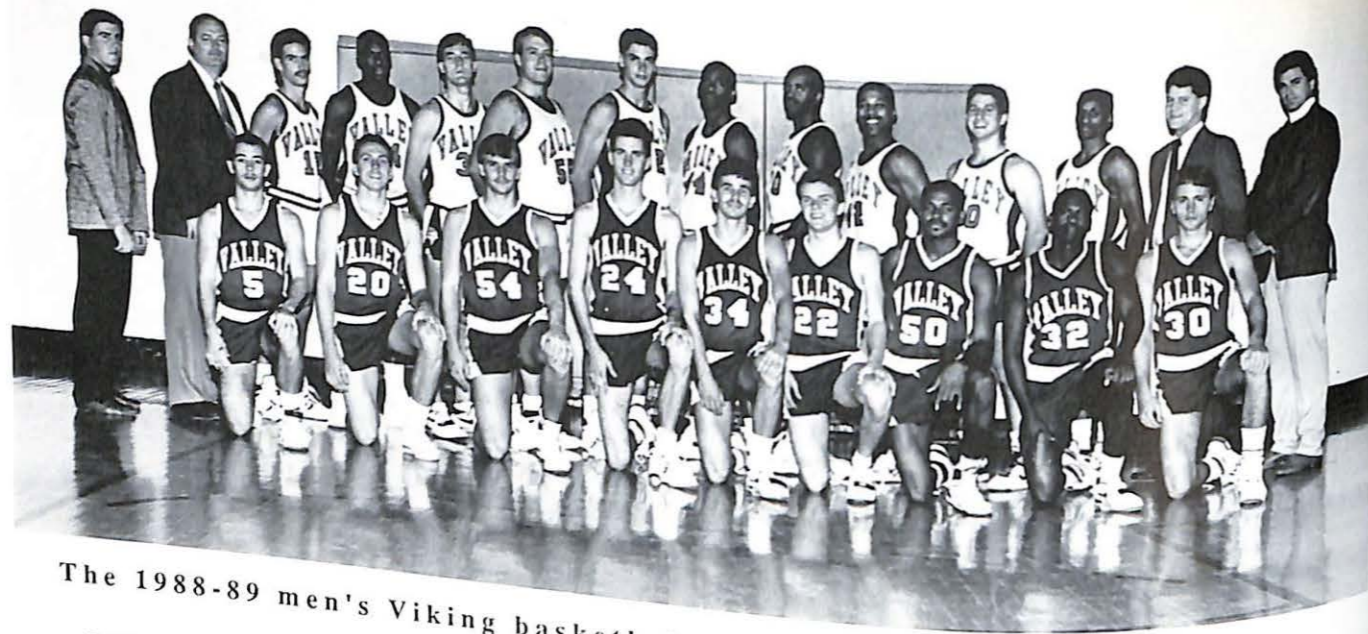
Spring Gospel dons Hi-Tops

Peer pressure was the theme of this year's spring gospel concert, performed by the MVC Gospel Choir March 2. Directed by Diana Malan, the musical about youths auditioning for the group Hi-Tops provided a message that appealed to all ages: always be your best and reach for the top.



From top: Director Diana Malan runs through some final directions; Anthony Blake tempts Charla Morrow; Bobby Wehrle leads the group in "I Wanna Be in the Band"; and then gets accepted.

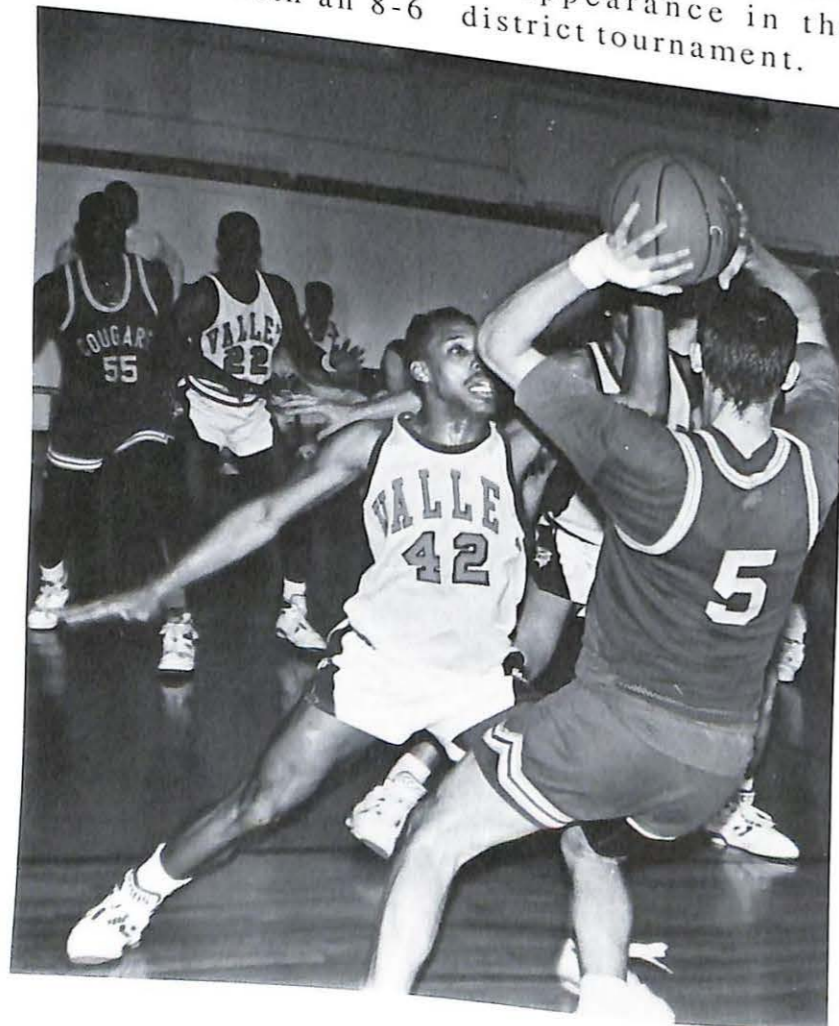




The 1988-89 men's Viking basketball team.

Viking men finish 18-11

What began as a team with a number of question marks ended the season with an 8-6 loop record, a third-place league finish and an appearance in the district tournament.

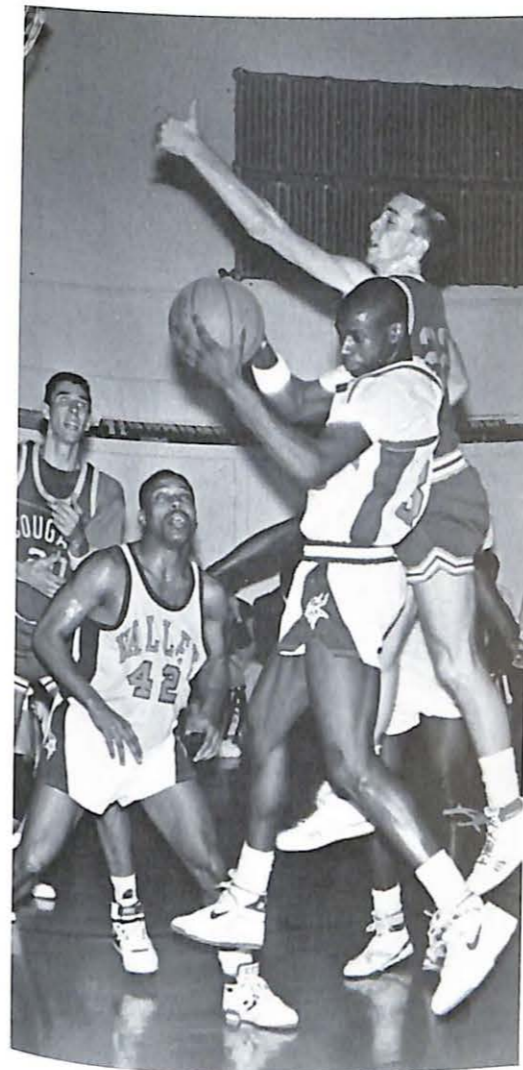


Left: Jerome Thurmon plays some in-your-face defense,

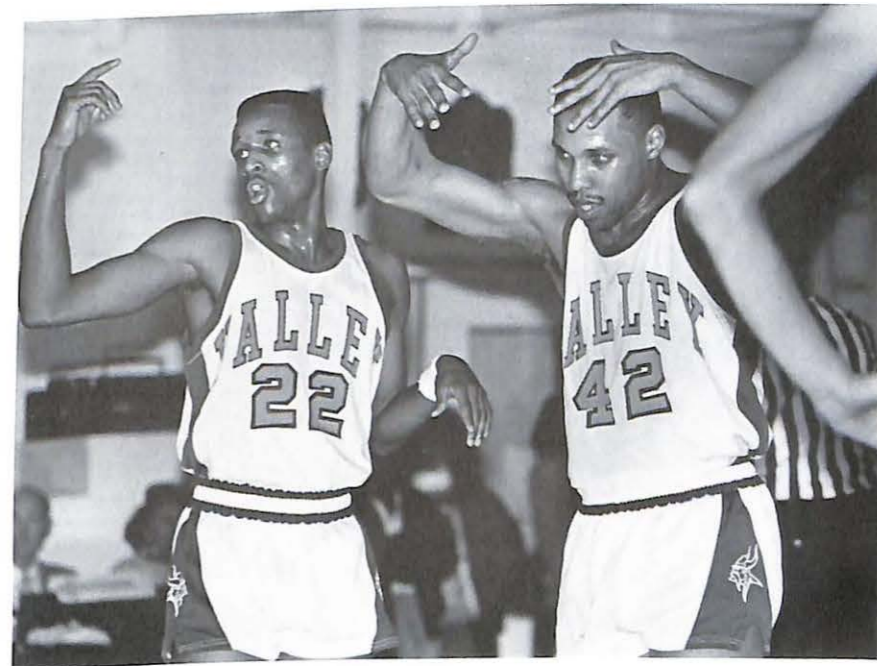
Coach Denny Fox said after the season few teams could match the Vikings for improvement, or for playing up to potential.

Junior forward Reggie Palmer led the squad with 653 points and was named conference newcomer of the year as well as first team all-HAAC.

Jerome Thurmon (362 points) and captain Tony Thurston (483 points) received honorable mention. They, along with Darrel Stogsdill and Doug Watkins (417 points), will be lost to next year's team.



From above: Reggie Palmer clears a rebound; Coach Fox gives pregame encouragement; Allen Hundley and Jerome Thurmon call a meeting; Vikings all.





From below: Tony Thurston dives; and then jumps; the bench gets up; Doug Watkins drives; Scott Hager and Hobie King announce over KNOS.



Above: The 1988-89 MVC women's basketball team.

Left: Dee Holman shoots the breakaway layup.

Women finish 2nd in HAAC play

The Viking women didn't quite meet all of their goals for the season, but who can argue with success that brings a 15-11 record, a second place league finish and the No. 10 spot in district rankings?

The Vikings made it through the season with just one senior, but she happened to be the conference player of the year -- Aline Roy. In 26 games Roy racked up 504 points, 169 rebounds, 93 assists and 112 steals.

"She was consistent all year," coach Jennie Rutledge said.

The squad as a whole was also fairly consistent, as five other Vikings scored between seven and ten points per game.

Sophomore Brenda Hayes earned honorable mention in all-conference balloting.





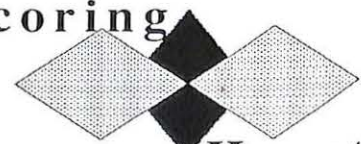
From above: Renee Krewson pulls up; Joy Burd looks inside; Laura Schneider looks for a shot; Aline Roy starts a drive; Jeri Burd signals a pass.



From right: Roy and Joy Burd spread the defense; all eyes are on the ball; Krewson looks for an opening; Holman keeps the ball out of reach.



Scoring



Hearts

Members of Tau Kappa Epsilon are, first row (L-R): Scott Bridges, Scot Hildreth, Sam Richardson, Brad Drehle, Farrell Shelton, Randy Barker, Brian Clayton, Steve Ross, Edie Wirthwein, Doug Clayton, Greg Bell and John Brazzle.



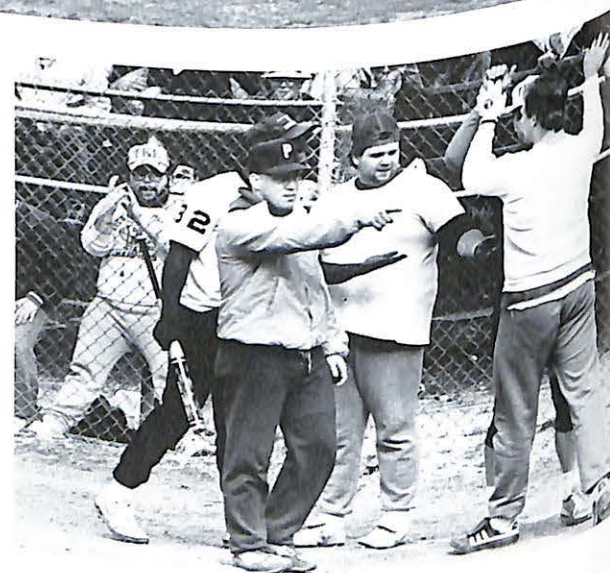
Second row: Brian McColum, Doug Stevens, Danny Hudgens, Doug Morland, Dave Byrd, Jeff Keiser, Scott Sievers, Jay Collister, and Todd Vaughn.

Back row: Jeff Watson, Paul McBride, Martin Woody, Paul Day, Ray Lock, Grant Leighty, Chris Horst, Bryan Atterbury, Rod Williams, J.W. Brown, Chris Markley, Joe Cullen, Ron Eason, Joe Deyaeghere and Craig White.

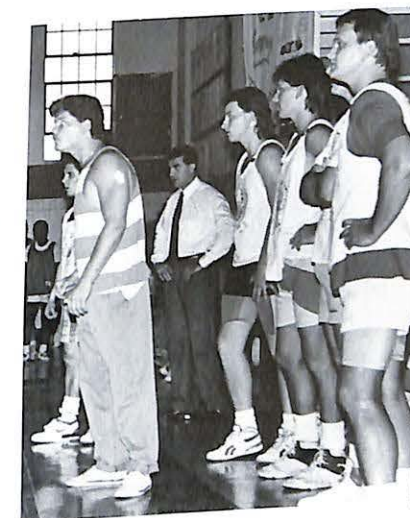


TKE Little Sisters are, front (L-R): Becky Hutson, Shannon Sheldon, Carla Carr and Chris Jones. Back: Michelle Miller, Cheryl Thienpont, Alicia Sears, Tracy Tettaton, Johnna Fosnow, Jennifer Farris and Julie Green.

TKE



Members of Alpha Sima Phi are, first row (L-R): Mark Jones, Kevin Box, Maurice Mitchell, Jay Stevens, Darin Stevens and Marc Emanuel. Second row: Denny O'Dowd, Jasper Bianco, Marc Lowe, Brian Woodfine, Tom Ledbetter, Scott Tomc, Steve Jones, Shawn Kanak, Brian Henry, Dave Parrish and Jason Moss. Up the stairs: Mike Hedrick, Dave Pever, Todd Vance, Paul Kaminski, Greg Jones, Michael Nance and Intikhab Baluch. On rail: Byron Moore and Tarron Smith. Back row: Pete Padilla, David Arreola, Bryan Kebrdle, Kevin Conway, Matt Burson, Eric Woodfine, David Hedrick, Bill Hutchinson, Rob Jordan and Scott Hager.



Greek Week Champs

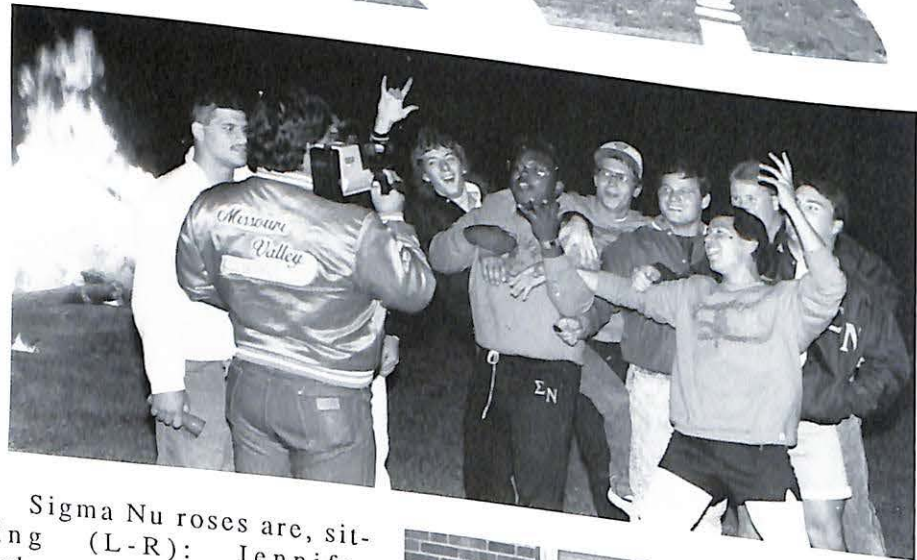
ΑΣΦ

Alpha Sigma Phi Little Sisters are, front (L-R): Lisa Shifflett, Bethany Helmich, Karen Sullivan, Sheila Barrios and Suzi Ellis. Second row: Susan Hines, Amy Kennedy, Beth Byrd, Stephanie Lamb, Melinda Muniz and Renee Utz. Third row: Melissa Westfall, Kathy Brandt, Qiana Mosby, Dee Holman, Debbie Lawn, Aimee Nimmo, Carrie Lawn and Luci Cheong. Back row: Tricia Schneider, Charla Morrow, Debbie Wunderlich, Katie O'Dowd and Susan Sheetz.





Members of Sigma Nu are, kneeling (L-R): Jeff Dockerty, Corey Zuehlsdorf, John Walters, Carlo Ligotti, Robbie Jacobs, Chad Fuqua and Gary Taylor. Second row: Guy Capparelli, Scott Buckley, Brian Hargiss, Dennis Birkle, Paul Lashley, Bill Tucker, Mark Crafton, Ray Stradley, Scott White, Steve Symes, Tom Sheppard and Marty Saucedo. Back row: Darin Fair, Rick Van Nostrand, Scott Schneider, Todd Thurston, Scott Young and Bob Casey.



Sigma Nu roses are, sitting (L-R): Jennifer Schaper, Heather Shaver, Lori Ruff, Ginger Sallee, Jodi Rhodes, Rhonda Newbould, Angie Hartley and Bev Lamke. Back: Gigi Goesling, Jeri Burd, Kim Bastian, Rhonda Collins, Shelli Gillespie, Becki Meiners, Chris Eddy, Pam Cumpston, Tiffany Pollard, Shana Stillings and Krista Blajez.



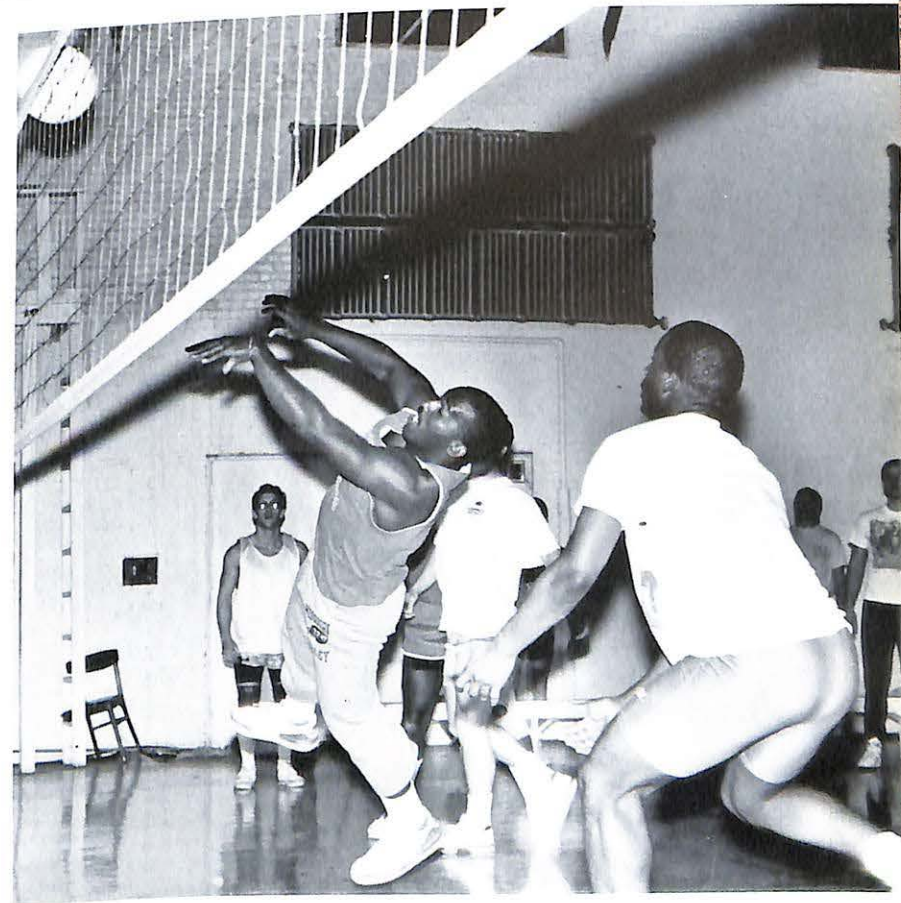
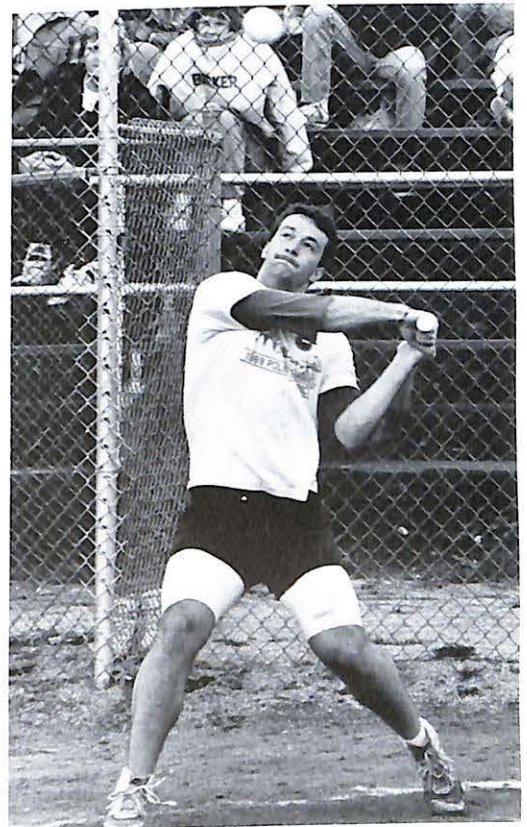
Members of Alpha Xi Delta are, front (L-R): Kathy Brandt. Seated: Amy Richardson, Tiffany Pollard, Susan Ellis, Ginger Sallee, Vicki Smith and Heather Shaver. Standing: Angie Williams, Sandra Seaton, Chris Eddy, Pam Hall, Renee Utz, Vicki Stragliati, Tiffany Seabaugh, Sheila Barrios, Karen Walter, Angelica Serrano, Nikki Saale, Michelle Marshall, Gigi Goesling, Angie Hartley, Debbie Lawn, Melissa Mullins and Carrie Lawn.



Greek Week
Champs

Results

- Volleyball: ΑΣΦ, ΑΖΔ
- Weight-lifting: ΑΣΦ, ΑΖΔ
- Basketball: ΣΝ, ΑΣΑ
- Wrestling: ΤΚΕ
- Chariot Relay: ΑΣΦ
- Chariot Sprint: ΑΣΦ, ΑΖΔ
- Tug-of-War: ΤΚΕ, ΑΖΔ
- Quiz Bowl: ΤΚΕ, ΑΖΔ
- Track: ΣΝ, ΑΖΔ
- Softball: ΑΣΦ, ΑΖΔ

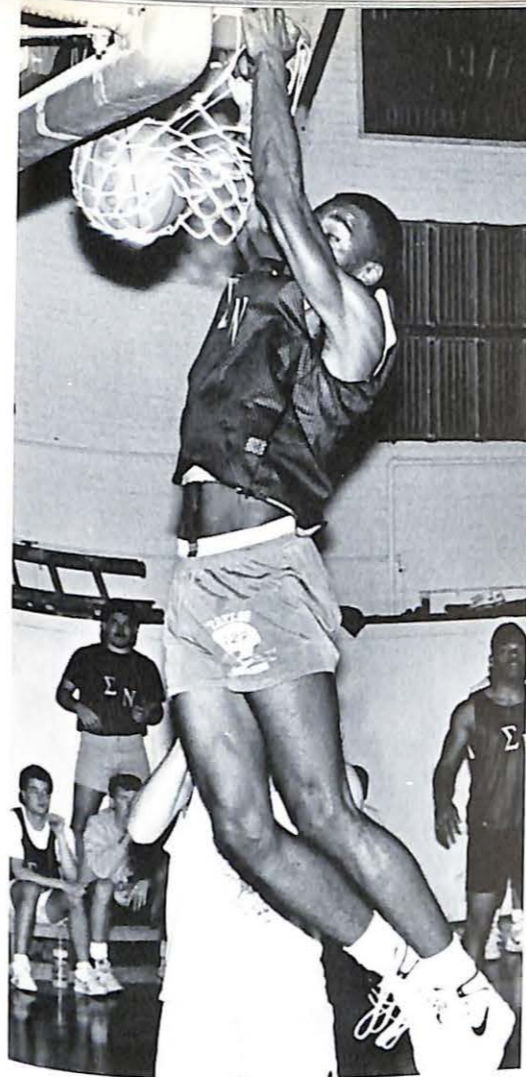


ΑΣΦ, ΑΖΔ win Greek Week laurels



From top: Alpha Sigma Phi knows it has Greek Week in the bag; Aimee Nimmo and Carrie Lawn exchange hands; Alpha Sig packs in the fans; Marc Lowe wants attention.

From above: Lisa Boone and Jodi Rhodes try their hands at softball; ASA's quiz bowl team thinks real hard; Todd Moore shows some enthusiasm; Paul Day practices good batting form; Brian Clayton makes a save.



Γρεεκ Μινδος



From above: Tony Thurston jams; Aimee Nimmo bumps; Kim Bastian swings; SN watches.



Opposite page, from top: AZD wins at volleyball; Sandra Seaton warms up; Luci Cheong misses the play on Carla Carr; Sigma Nu puzzles one out; volleyballers; Kevin Box lends support.



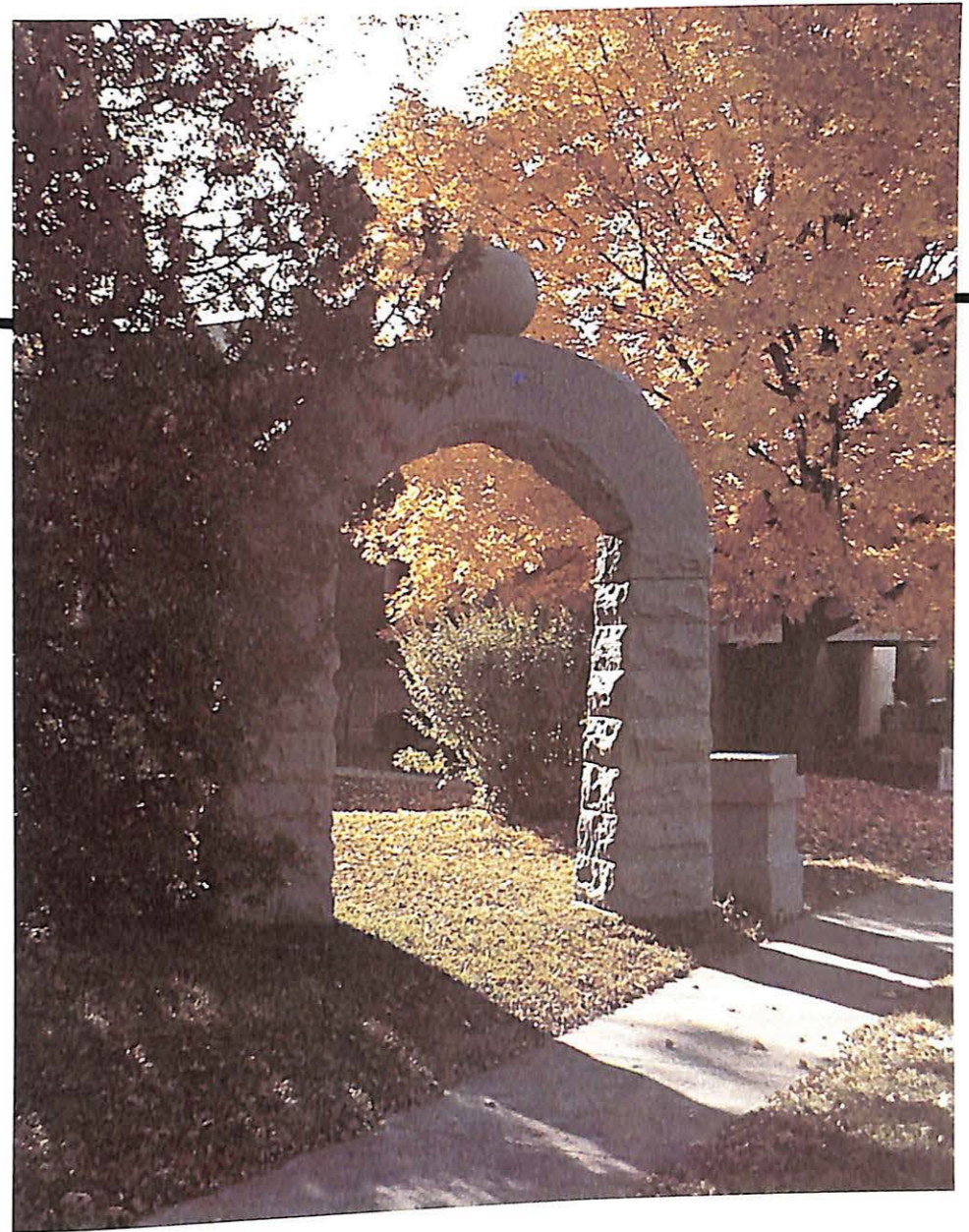


Members of Alpha Sigma Alpha are, sitting (L-R): (unidentified), Janet Moore, Carol Dillon, Anne Gibbs, Carla Carr, Charisse Kielty, Luci Cheong and Tanya Bailey. Standing: Cary Mikels, Jodi Rhodes, Sally Thomas, Ellen Burgess, Shelli Gillespie, Kim Bastian, Maria Louros, Krista Blazej and Carolyne Cesar.

ΑΣΑ



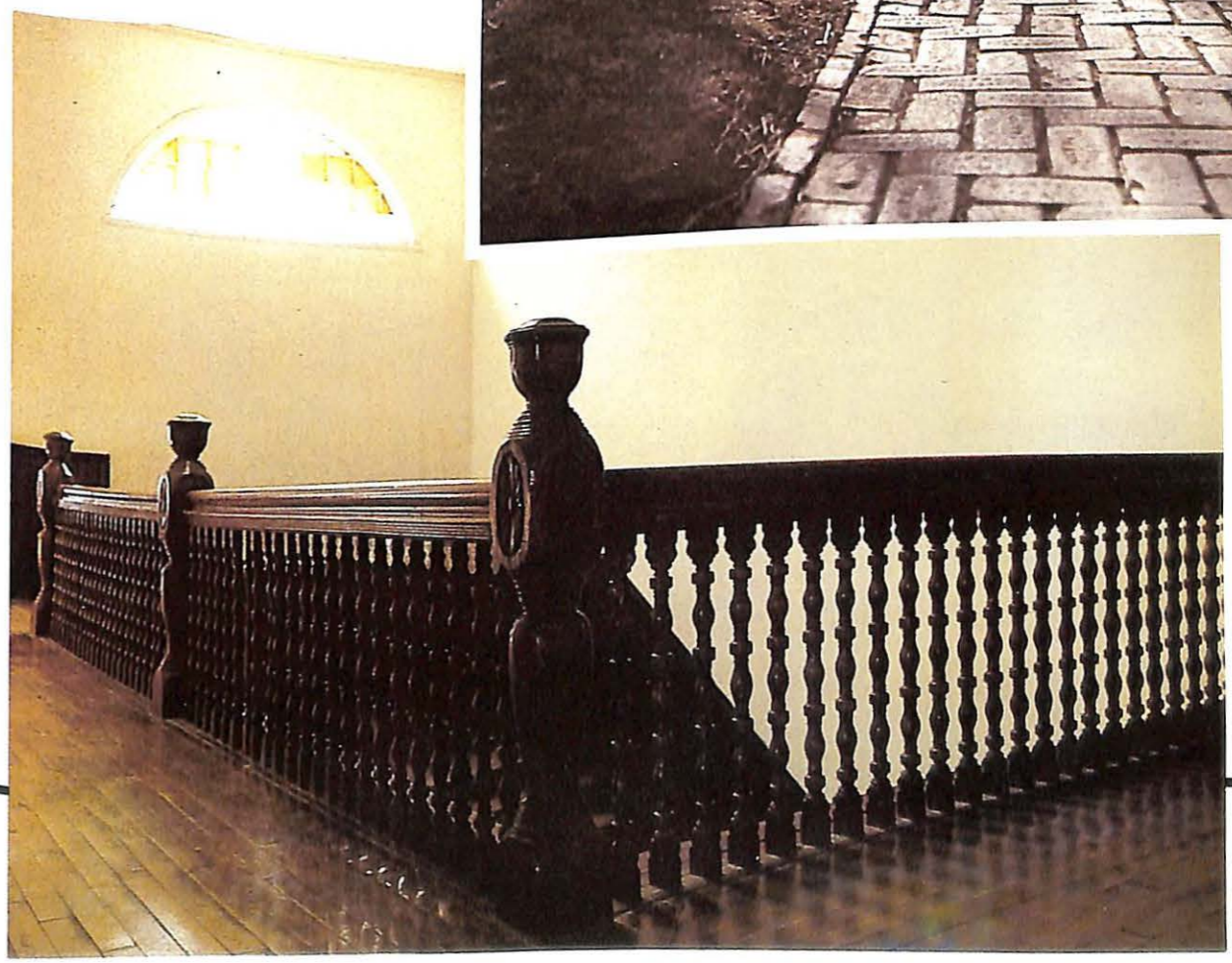
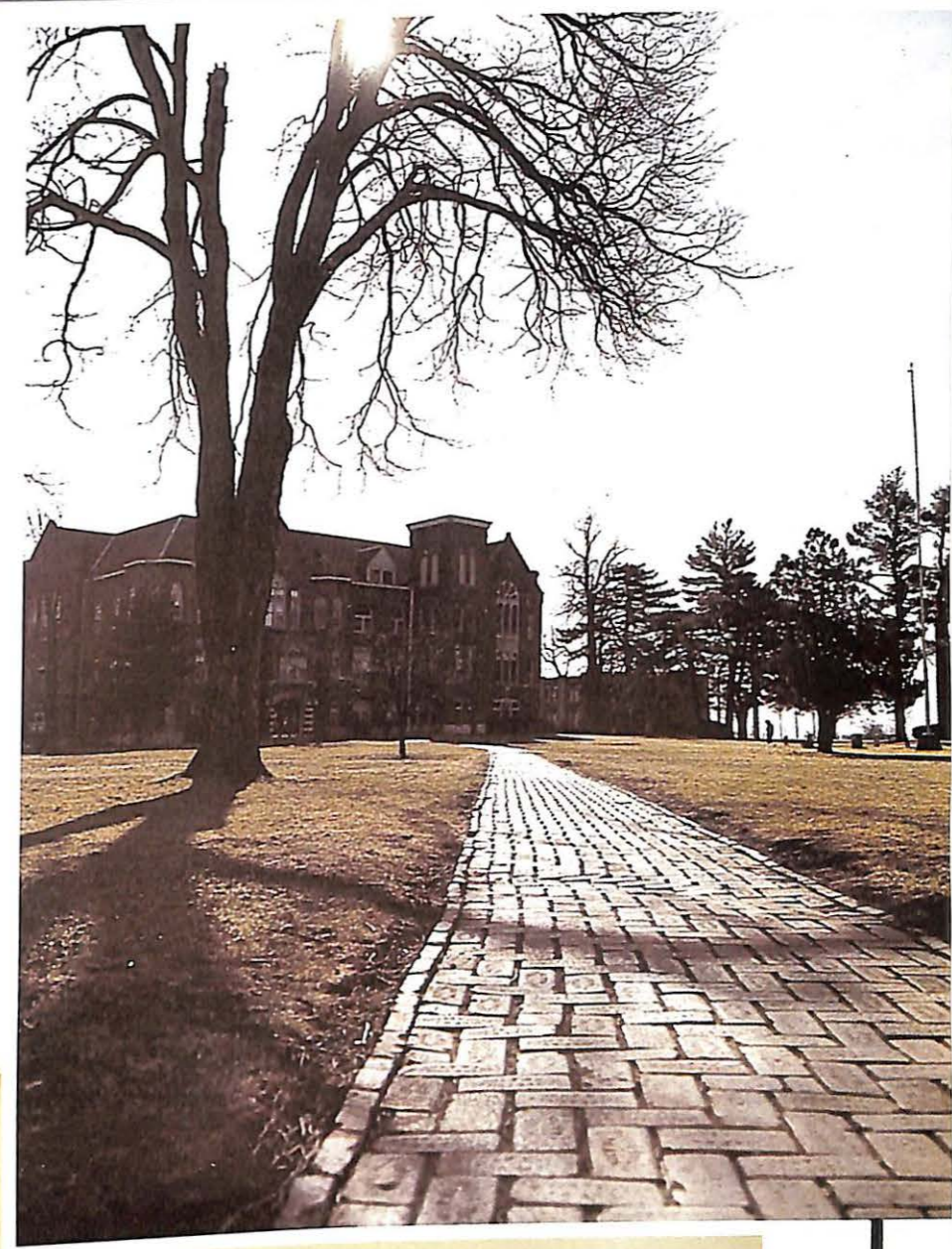
Alpha Sigma Alpha Big Brothers are (front to back) Steve Jones, Chris Horst, David Pever, Larry Taylor and Dave Parrish.

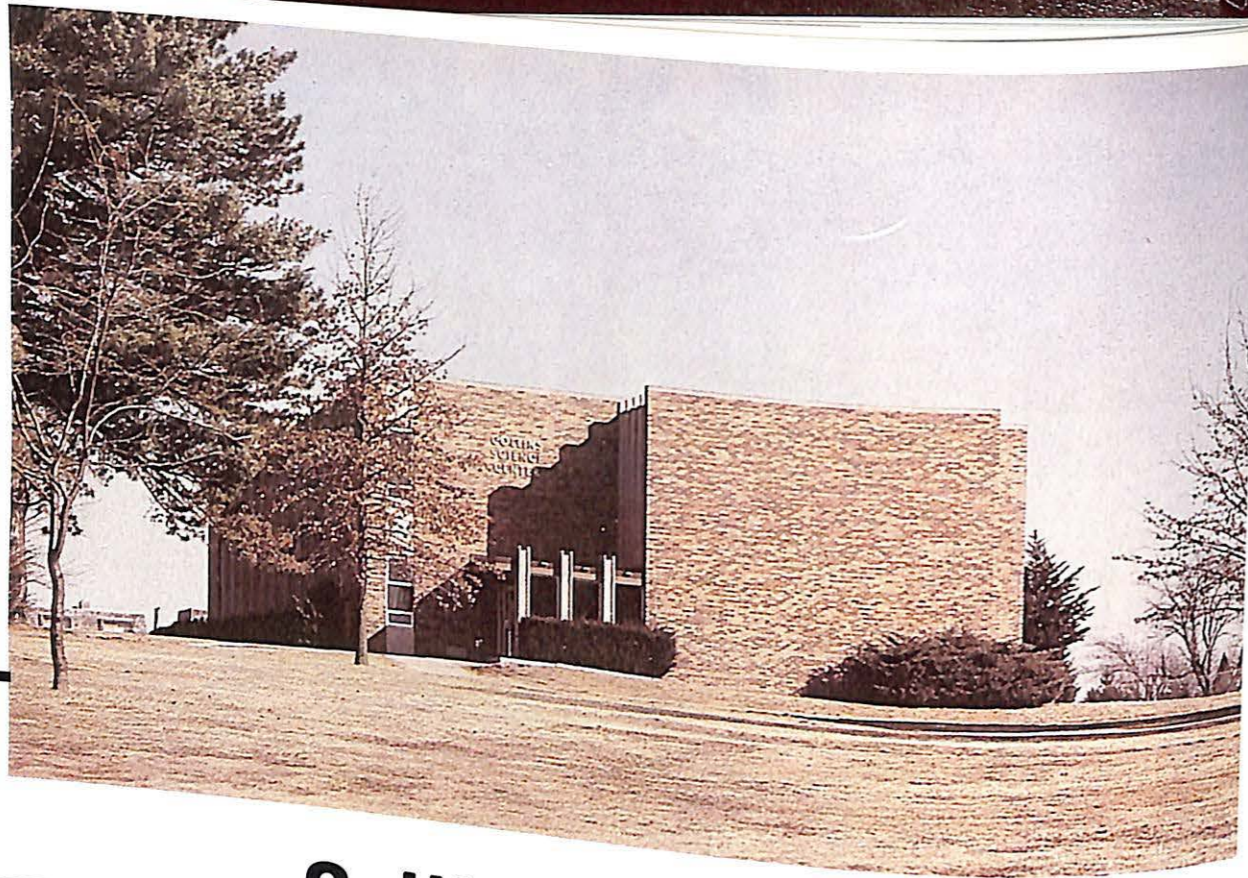


Founded 1889



Baity Hall

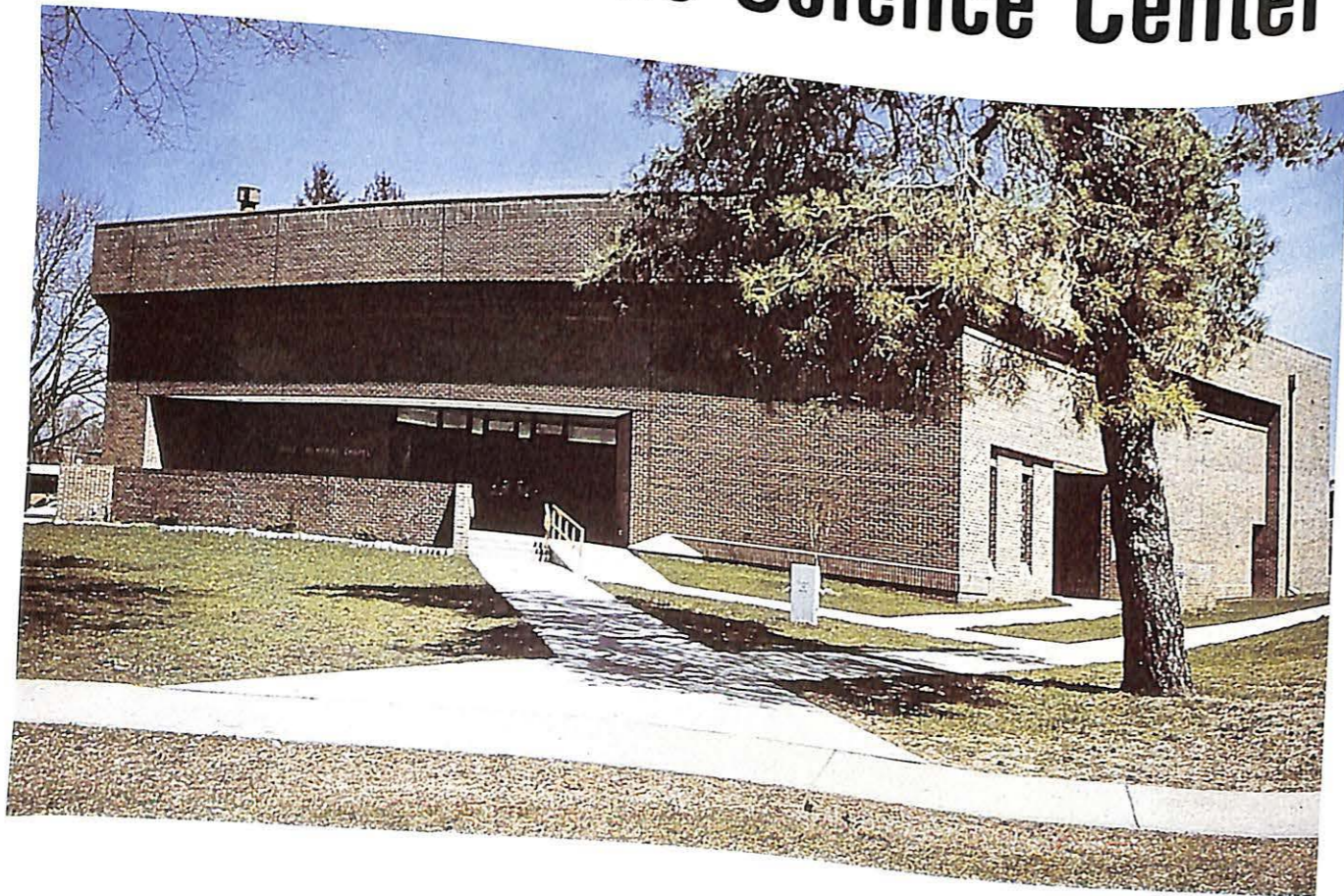




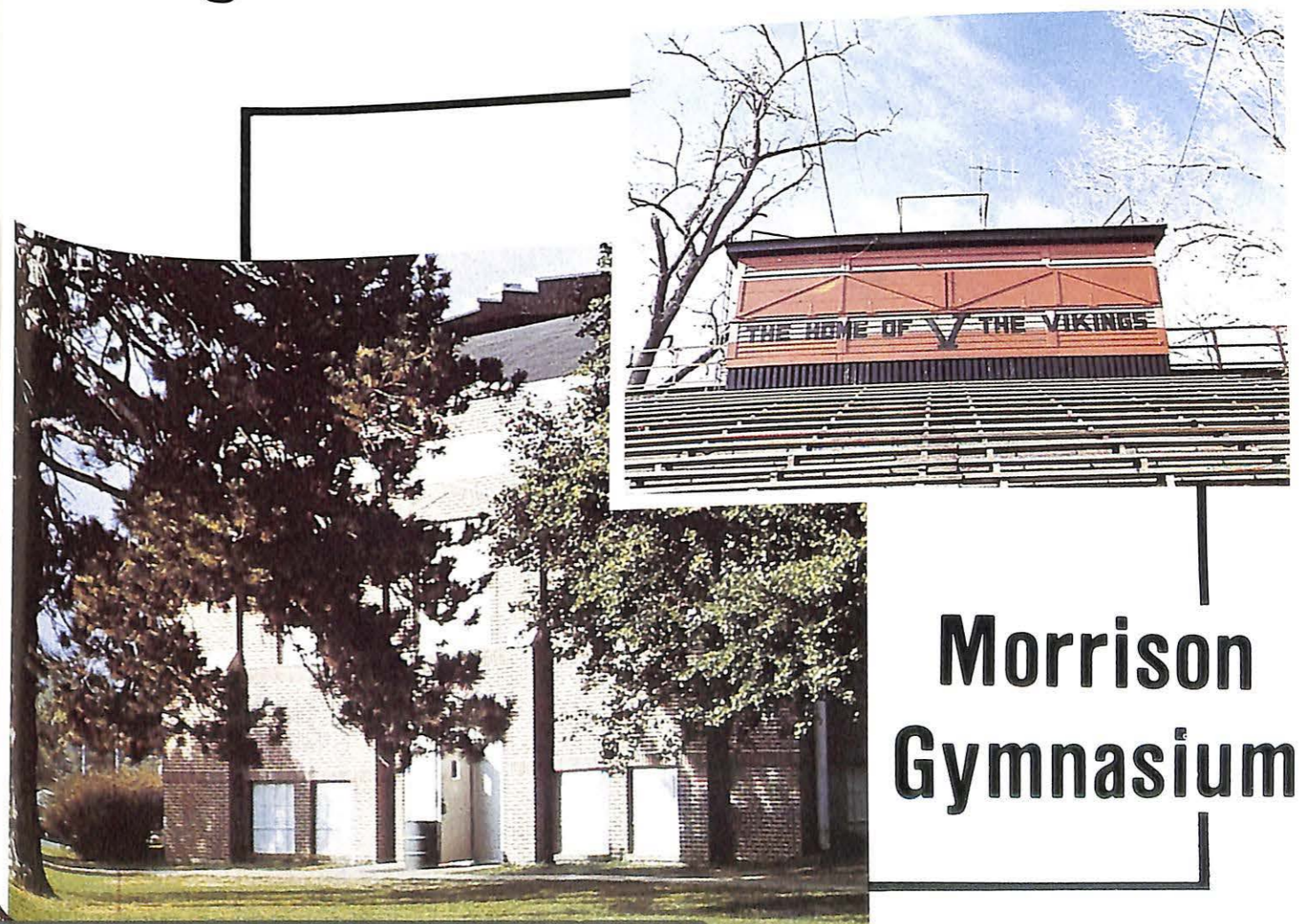
Collins Science Center



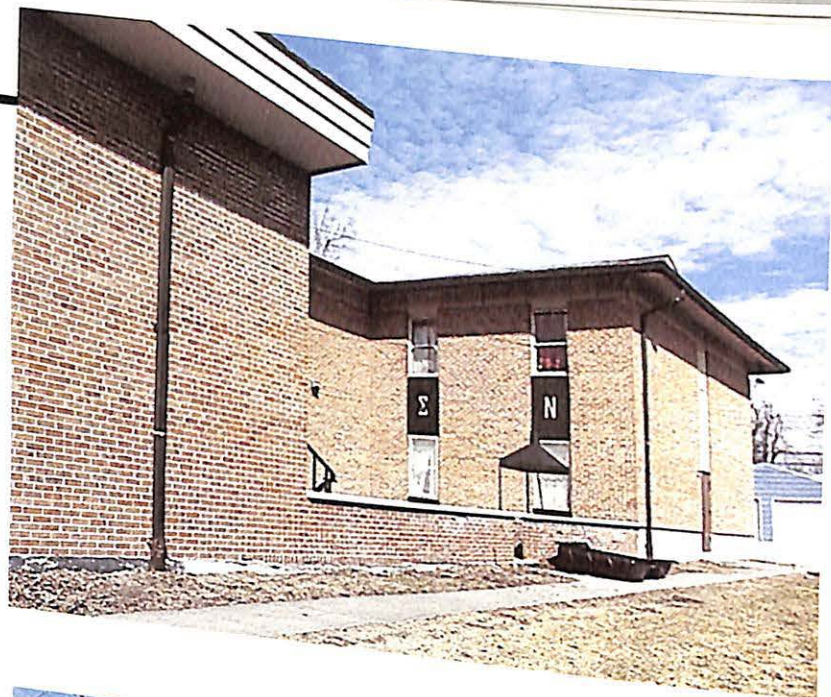
Ferguson Center



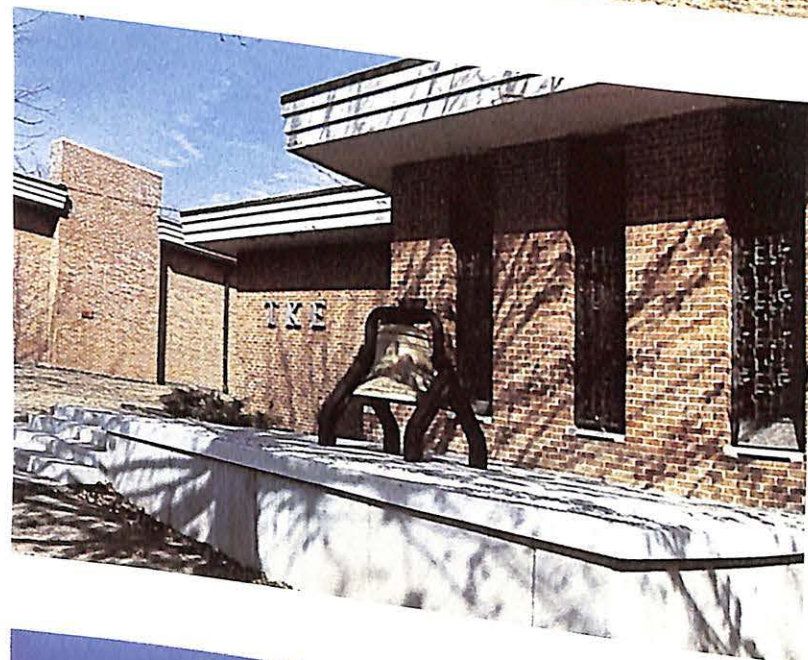
Mabee Chapel



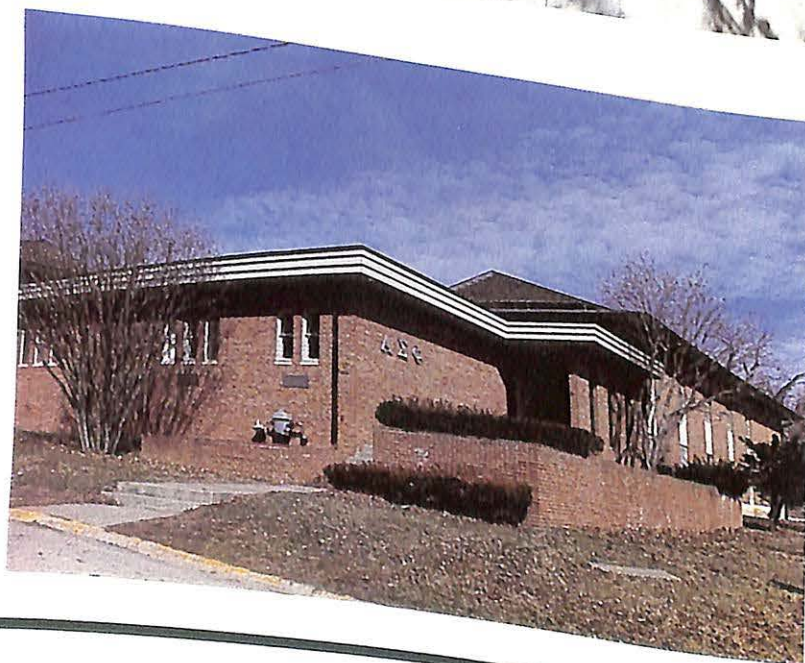
**Morrison
Gymnasium**



**Sigma
Nu**



**Tau
Kappa
Epsilon**



**Alpha
Sigma
Phi**



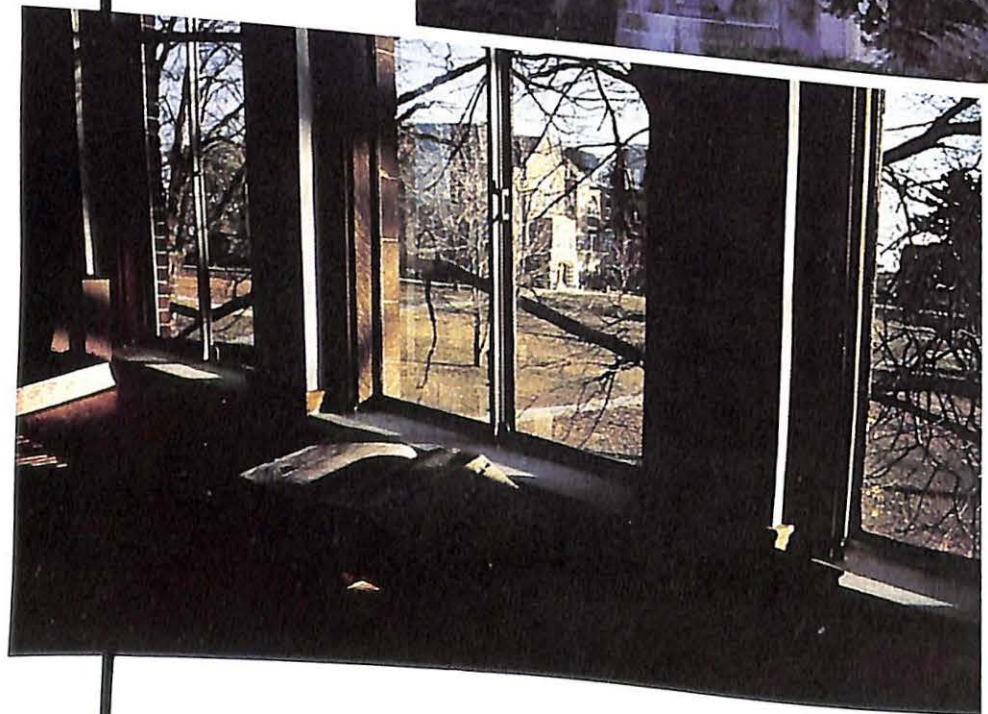
Moreland Hall



Young Hall



**MacDonald
Hall**



Murrell Memorial Library



ΦΒΣ

Members of Phi Beta Sigma are, front to back, Bruce Simpson, Derek Bowden, Robin Howard, Jerome Thurmon, Warren Paige, Darrell Phillips and Jearold Jones.



Sigma Sweethearts

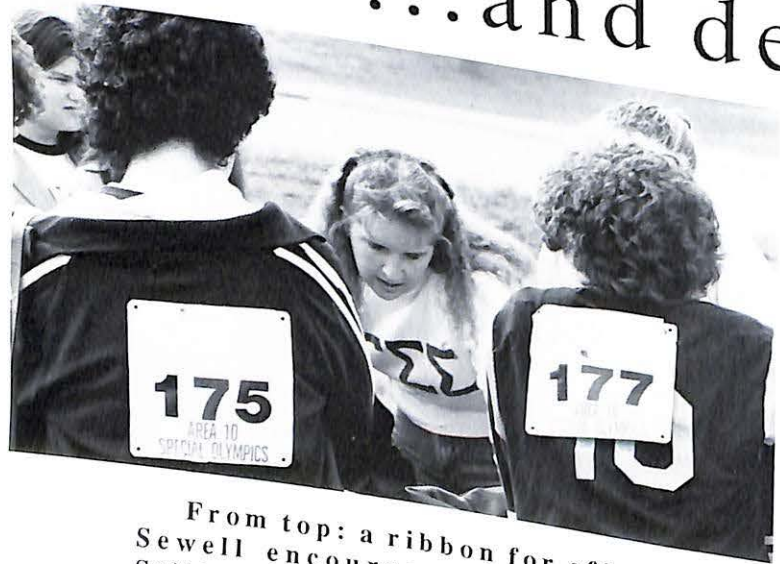
Members of Sigma Sweethearts are, front to back, Kay Johnson, Donna Walker, Pat Orr, Phebe Washington and Stephanie Duncan.



Pride...

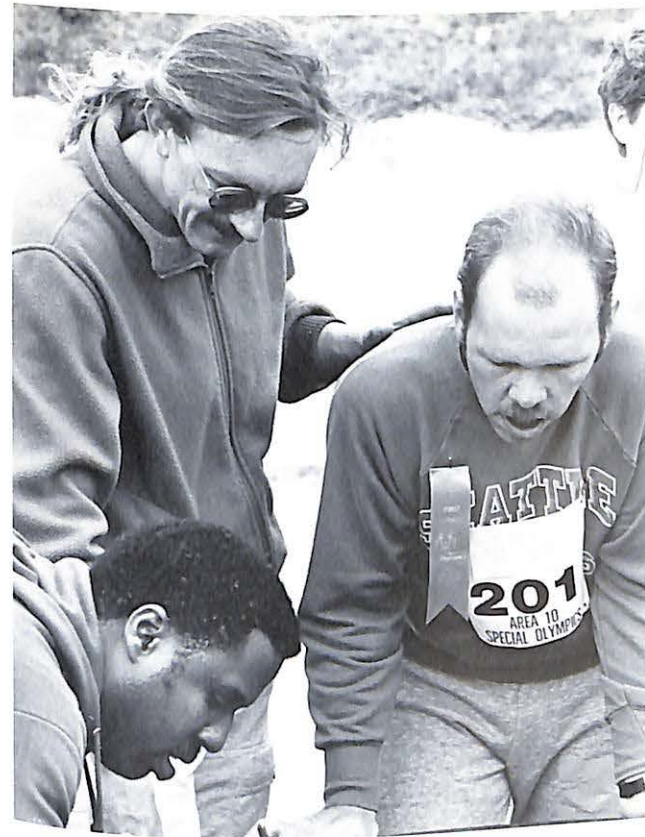
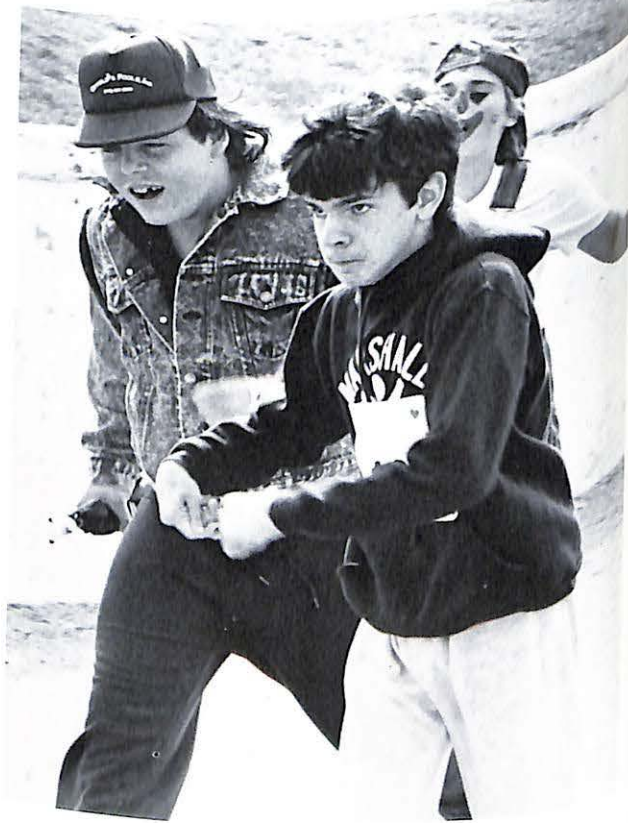


...and determination

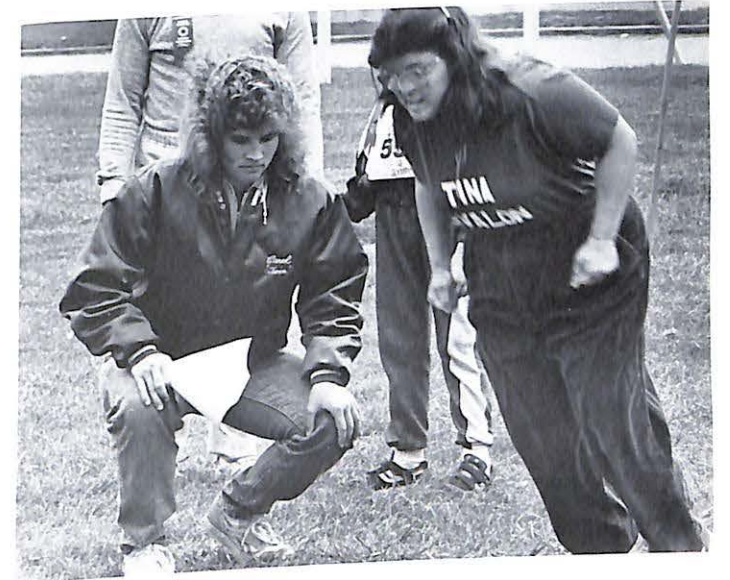


From top: a ribbon for effort; Mike Sewell encourages a runner; Shana Stillings checks in competitors.

Brave hearts abounded as MVC again hosted the local Special Olympics track and field competition. Fraternities, sororities and just about anybody else who was interested helped organize and run the all-day event that drew Olympians from across mid-Missouri.



From left: Larry Bradshaw and Melvin Edwards find the winner; Carol Thienpont measures; Nancy Knapp minds the softball throw; Tom Ledbetter starts a sprint; Mary Bender leads Crime Dog.





From above: Todd Vaughn, Robby Jacobs and Gary Taylor greet a winner; Corey Zuehlsdorf lends a hand; Scott Obermoeller entertains; Angie Hartwig and Robbie Ludy take care of Smokey the Bear.

Opposite page, from top: timers don't play favorites with their cheers; Bill Koch hands out balloons; Carole Dawn Arrendale loosens up a competitor; last minute instructions from Wayne Hill; Eric White is just another clown in the crowd.





Business Club

Members of Business Club are, front (L-R): advisor Gary Vazzana, Bev Lamke, Scott Herrick, Gigi Goesling, Billy Rutledge and Rhonda Dodson. Second row: Scot Hildreth, Mike Novak, Terence McCoy, Scotty Campbell and Allen Hundley. Third row: Pat Vazzana, Carlos Guimbarda, Pam Hall and Samira Hussein. Back row: Steve Mitchell, Darrel Stogsdill and Sam Richardson.

Business Minds



Above: Scott Herrick and Carlos Guimbarda mind the Business Club booth at the Chamber of Commerce banquet sponsored by MVC.

Left: John Pelzer, commissioner of administration for the state of Missouri and an MVC grad spoke to students on opportunities in state government.



Above: Members of Students in Free Enterprise are, front (L-R): Richard Anderson, Kim Kimberling and Laura Lehman. Middle: Advisor Ron Pardeck and Pat Townsend. Back: Kevin Maroney, Billy Rutledge and Gigi Goesling.

Right: John Wilson, KMMO radio, speaks to students during Free Enterprise Week.

Below: SIFE members display the trophy they won for being the best rookie team in a central region competition.



SIFE



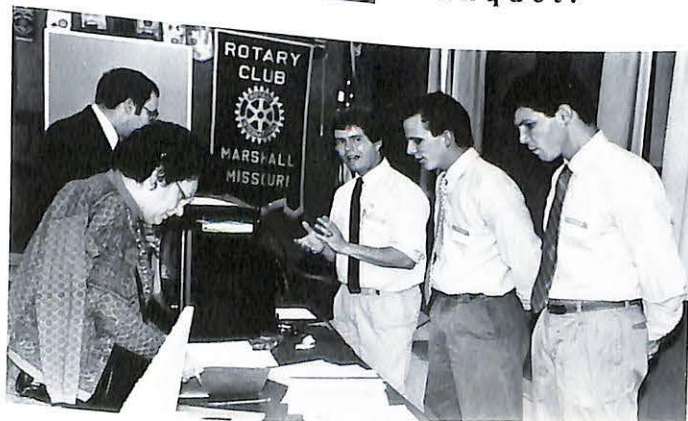
Members of American Humanics are, kneeling (L-R): Wayne Ogle, Jennifer Farris, Dawn Wheeler, Johnna Fosnow, Leigh Ann Moutray, Eugene Jones and Jennifer Hight. Standing: Steve Gantner, Bill Koch, advisor Margaret McNair, Luann Sherbeck, Bill Stephenson, Kristin Estill, Tom Kroenung, Melinda McGlothlin, Kevin McKinley, Mary Bender, Charles Day, Larric Mann and Steve Estill.



American Humanics

Left: An American Humanics Student Association meeting is interrupted.

Below: John Day, Bill Stephenson and Tom Kroenung field questions at a Chamber of Commerce banquet.



Drama Jocks



Above: Members of Drama Jocks are, front, Anthony Blake and Elaine Harris. Back: Erin Hennessy, Stephanie Miller, Shannon Sheldon, Tracy Tetta-ton, Amy Swiger and Carla Carr.

Right and below: halftime performances.



Godspell ends theatre year

The 70's play Godspell got a new setting as produced by the MVC Theatre Department. Director Steve Taft set the play in a home for the mentally disabled where the Gos-

pel according to St. Matthew was played out in word and song.

The play opened three sold-out nights April 22.

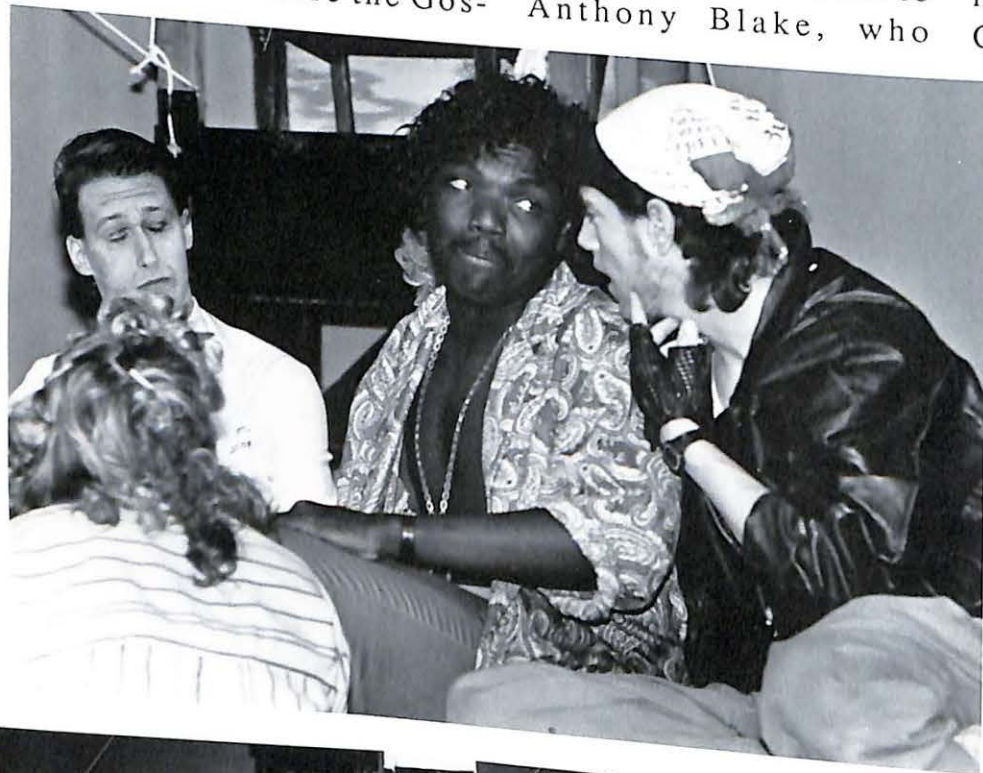
The lead role went to Anthony Blake, who

was joined on stage by Shannon Sheldon, Chris Hadley, Dana Cogar, Amy Swiger, Brian Smith, Carole Dawn Arrendale, Erin Hennesy, Simone Lawson, Cliff Lawson, Jocelyn

Bell, Tara Goslik and Connie Vaught.

Marilyn Hinson choreographed the movements of the actors and even played a small role as the angel of death in the play's climactic scene.

Diana Malan acted as musical director.



From above: Blake points the way for Sheldon and Cogar; Swiger gets into her character; the play works towards its climax; a few of the patients.



From above: Shannon Sheldon, Dana Cogar and Brian Smith dine on Amy Swiger; Anthony Blake meets with his fellow patients; Carole Dawn Arrendale defends God's word.



The Vikings of summer

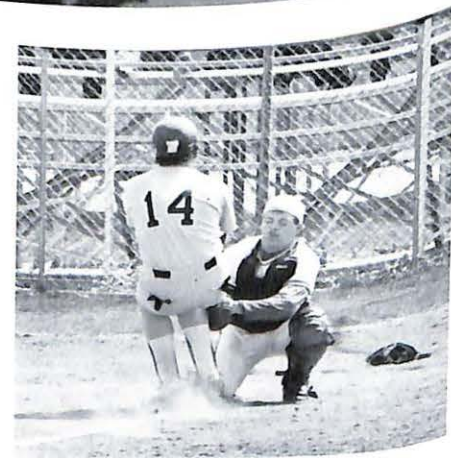
A successful season came to an end with four straight losses to Tarkio. The Vikings ended the campaign with a 25-16 record and second in the HAAC.

After splitting season doubleheaders with Evangel and Culver-Stockton, Valley had a 10-2 league record and a chance to take the conference. The Owls came to Marshall and ended the drive, however, by sweeping a twinbill, and later ousted MVC from the District 16 tournament.

Diamond Minds

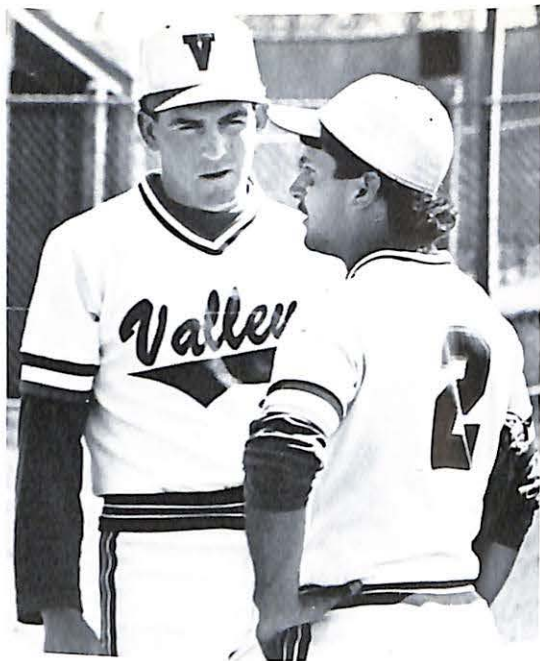


From left: Vrooman calms his pitcher, Rod Buford; spring sun and baseball; Robby Wilson makes a stab; Kevin Culkin starts a rally; Coach Givens gives an umpire a piece of his mind.



From left: Bill Teller stretches; Phil Sullivan pitches; John Vrooman stops a run.





The 1989 Viking women's softball team.

Softball team lives up to promise

The preseason line on Missouri Valley's softball team was that it would be improved and would be competitive. The Vikings lived up to the promise by finishing the regular season at 17-14 (10 more wins

than last season) and finishing third in the Heart of America Athletic Conference tournament.

MVC drew an invitation to the District 16 Tournament, but in the first round fell to a Co-

lumbia team that was 55-3 and ranked No. 1 in the national NAIA polls.

At the conference tournament Valley won its first two games before falling 1-0 in eight innings to Tarkio, then 10-5 to Culver-Stockton. The Owls went on to win the tournament.



From left: Bryan Scruggs shows the scouts his stuff; Givens gives the word; Teller makes the tag; the coach gives Wilson some advice.



Above: Coach Vickie Gibler brings in Felicia Santana.

Left: Celeste Holm goes into her windup.



From left: Pam Adams takes the easy out to Kim Leatherman; Kelly Murphy tastes the infield; "Great seats, huh guys?"; Kelly Murphy brings it in; Felicia Santana handles a bunt.



From left: Kendra Barton goes for a double play; between-game chat; Leatherman slides in safe; Kidd eyes home.



Earning individual mention for the Vikings were all-HAAC first teamers Pam Adams, Kelly Kidd and Celeste Blair. Jackie Downing, Kim Leatherman, Deanna Holman, Felicia Santana and Kelly Murphy earned honorable mention.

At the spring athletic banquet Gibler named Murphy as the most improved player, Kidd most inspirational, Blair most valuable and Adams honorary captain.



Men win HAAC; women second

The men's conference track title returned to Valley after a year's absence, and the women's squad finished runner-up to Tarkio in the league meet.

Making the title more satisfying was the fact the team missed the fall indoor title by one-half point.

Winning events at the league meet were Brian Clayton (triple jump) Claude Tolbert (100 meters); Joe Burks (220 yards); the 400 meter team of Tolbert,

Mike Polk, Al Williams and Burks; and the mile relay foursome of Terrence McCoy, Pat Smith, Burks and McCoy.

For the women, Susan Artkras won the javelin, Julie Poor won the discus and Dee Holman the 440-yard dash.

While the conference meet was the high point for the team, the peak came later for 14 individuals. The above-mentioned athletes, along with Emanuel Walker, Cassandra Salmons, Tiffany Pollard,

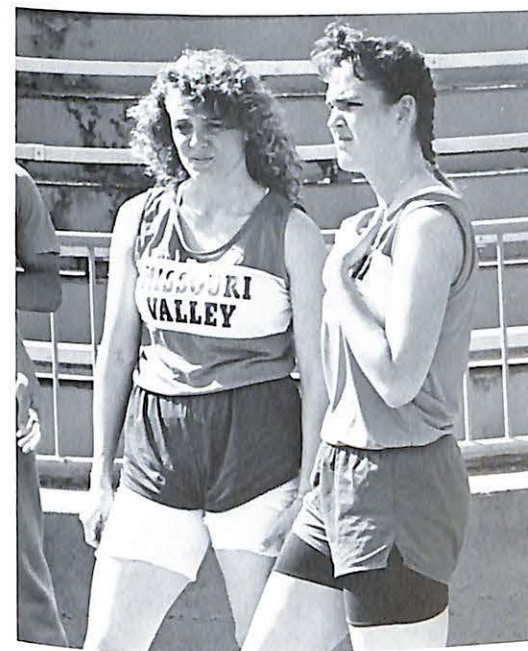
Yolanda Beasley, Mike Phillips and Sherese Hall qualified for the National meet in California. None of the athletes scored at the meet, but the fact it was done should give future athletes something to aim for.

Other season peaks went to Burks, who set the school record in the 400 meter dash; and Salmons, who set a new MVC standard in the triple jump.

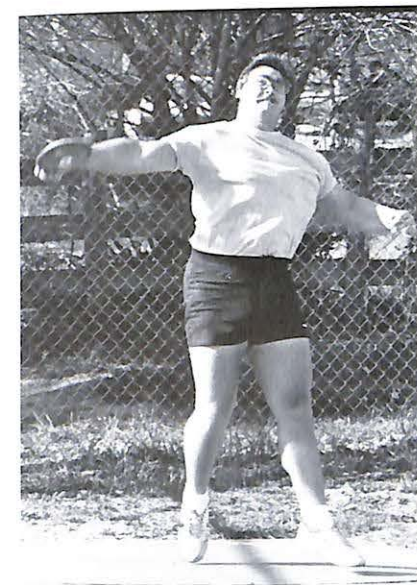
Artkras, who owns the school record in the javelin, continued to have her way in that event by winning at the District 16 meet, taking the high jump as well.

Top: Joe Burks (far left) and Claude Tolbert (far right) in a close 100 meter finish.

Left: Tiffany Pollard strains.



From left: Susan Artkras and Maria Duffy check out the hurdles; the athletes check times; George Matheis looks for more distance; Terry Graham steps high; Yolanda Beasley gives it everything she has; Dee Holman breaks out.





Spring awards in five sports

Five sports took advantage of the spring athletic banquet to bestow awards. Jennie Rutledge and Denny Fox completed the basketball season, Vickie Gible and Ron Givens wound up softball and baseball, and Dan Kratzer did the same for track.

The highlight of the banquet was the presentation of the Mr. Viking Award to Tom Ledbetter.

Above: Tom Ledbetter (left) picked up the Mr. Viking award, while Darrel Stogsdill took second in the voting. Coach Dan Kratzer made the presentation.



Left: Dee Holman (left) and Renee Krewson were basketball newcomers of the year. Above: Jackie Downing, and Janet Moore with WVAO awards presented by coach Jennie Rutledge.



Coaches Jeff Steinle (far left) and Vickie Gible (far right) presented these ladies with softball letters.



Students honored at final banquet

The annual student recognition banquet often signals the end of the academic year for underclassmen. Honoring students his year were Rita Ludwig (theatre), Mary Haas (bookstore), Gary Vazzana (Alpha Psi Kappa), Scotty Campbell (business and social science), Gene Adkison (education), Janice Weir (library) and Linda Teller (student life).



From top: Gary Vazzana hands Billy Rutledge a new briefcase for being the year's outstanding business major; Rita Ludwig with the outstanding senior theatre student, Anthony Blake; Linda Teller swears in the 1989-90 Student Senate president, Chris Hadley.





From left: the MVC Gospel Choir; the A Cappella Choir; Al Williams solos on "Rise Again"; Brian Smith in a Show Choir medley; Adam Fierros solos in the A Cappella Choir's Nylons medley.



Spring show features 60

More than 60 students took the stage for an hour and a half of song and dance, ending the 1988-89 performing arts season at MVC. The three choirs, under the direction of Diana Malan, performed a wide variety of music and dance numbers that featured student choreography.



Musical Hearts

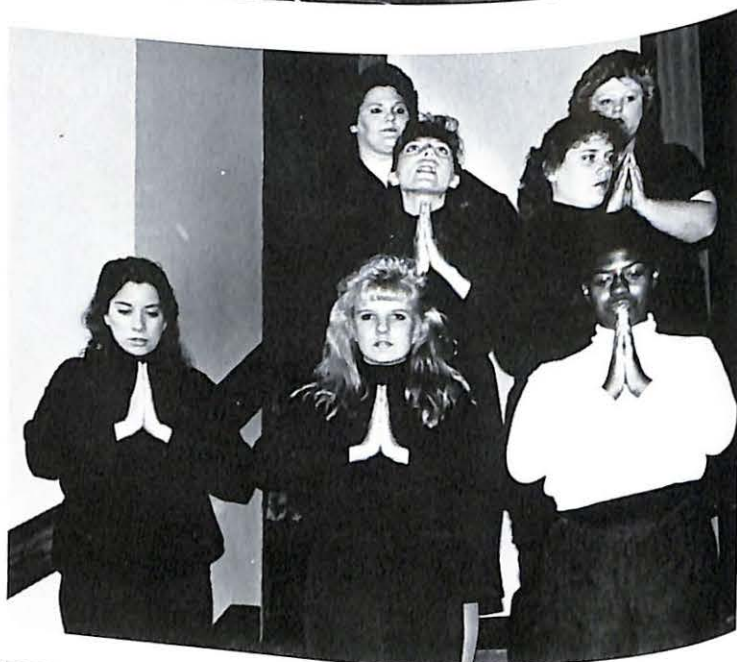


From top: the show choir rocks (back and forth); Martin Woody and Shannon Sheldon in "Phantom of the Opera"; "Little Shop of Horrors"; Tom Kroenung and Tara Goslik.



SIGN

Sigma Iota Gamma Nu



From top: Three members of SIGN, Shana Stillings, Jodi Arni and Megan Duchinsky; Aimee Nimmo; Mary Bender, Bryanne Bailey, Tonya Bailey, Nimmo, Lisa Anderson, Jennifer Hight and Melissa Vesser sign for the spring concert; instructor Roby Ludy; Mary Bender.



S-MSTA

Student - Missouri State Teachers Association



Top: Members of S-MSTA are, seated (L-R): Machille Hill, Lory Weinreich, Dana Markey and Connie Usnick. Standing: Audrey Crisp, Phil Bell, advisor Gene Adkison, Doug Winters, Dan Noble, Barbara Purdum, Karen Sullivan and Rex Catlin.

Joe Mitchell, elementary principal in the Marshall School District, speaks to students about future trends in education.
Bottom: MVC's S-MSTA chapter was honored as having the highest percentage of education majors of all the Missouri college and university chapters. Accepting the award from MSTA representative Don Meyer are (L-R): Gayle Siebert, Karen Sullivan, Dana Markey, Jerry Merrell and Earl Reeves.





Dennis Spellmann
Executive Vice President

Administration



David Williams
Dean of Admissions



Pam Williams
Director, Financial Aid



Earl Reeves
President



Dorothy Turnbaugh
Secretary to the President



Glen Steiger
Financial Aid Assistant



Admissions

Chad Freeman
Admissions Assistant

Stephanie Champion
Admissions Counselor

Faculty/Staff Minds



Dorothy White
Retired after 40 years at MVC



Development

Ramona Bullington
Development Office Assistant

Gayle McKinney
Development Officer



Diana Malan
Registrar

Registrar



Lisa Steinle
Registrar Assistant

Joyce Clause
Registrar Assistant

Business



Susan Kelly
Student Accounts

Sandy Machholz
Business Officer

Robin Gray
Business Office Assistant

Earlene Rinehart
Director, Student Accounts



Mary McNaughton
Library Assistant

Linda Carder
Reference Librarian

Janice Weir
Head Librarian

Library



Bookstore

Mary Haas
Bookstore

Maintenance



MVC's maintenance staff is, front (L-R): Randy Wise, Allen Rush, Richard Scharnhorst, Burma Jasper and Durwood Davidson. Back: Jerry Jacobs and David Butts. Not pictured: Tom Redford, Gary Whitney, Johnny Norris, Hazel Rafferty and Jack Bethel.



Student Life

Ken Bryant
Dean of Students



Larry Farrell
Assistant Professor



Robert Jones
Professor

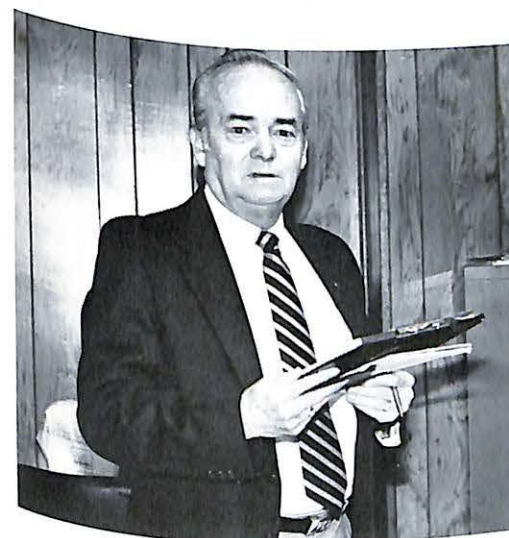


Sandy Sillers
Resident Director

Marsha Lashley
Director, Student Services

Linda Teller
Activities Director

Mike Machholz
Director, Work and Learn



Jack Hamlin
ALDS



Faculty

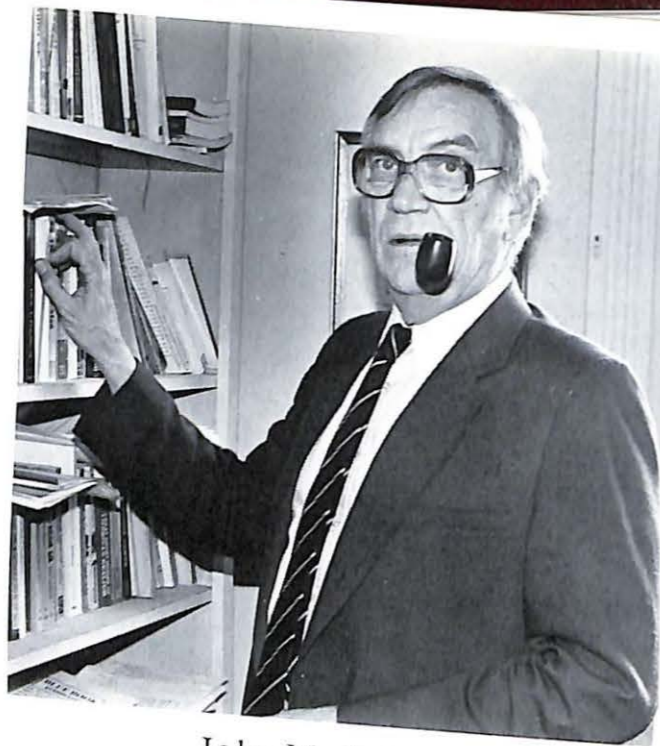
American Humanics



Carl Gass
Associate Professor



Margaret McNair
Executive Director, American Humanics



John McCallum
Associate Professor



Vernon Nester
Associate Professor



Gayle Senter
Instructor



Cindy Fox
Instructor



Tim Nelson
Associate Professor



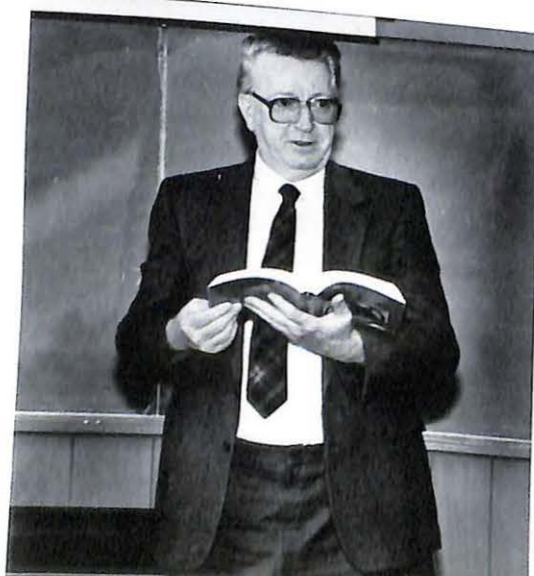
Rita Ludwig
Associate Professor



David King
Instructor



Joe Sadeghi
Associate Professor

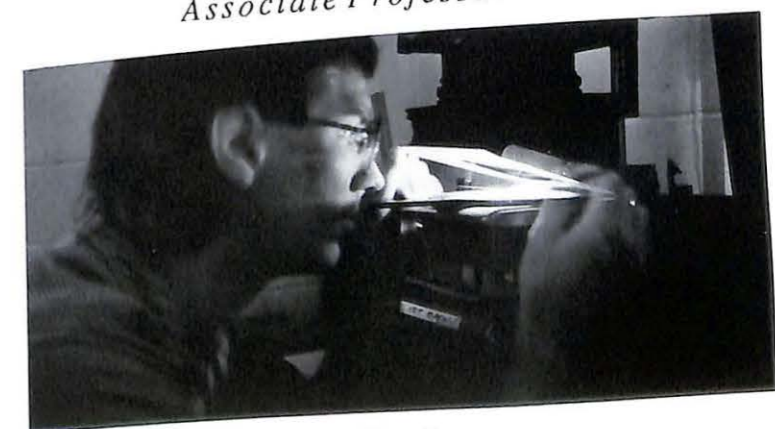


Virgil Rabe
Professor

Faculty

Arts and Humanities

Not pictured
Rimi Galenas
Assistant Professor



Ross Fuglsang
Assistant Professor



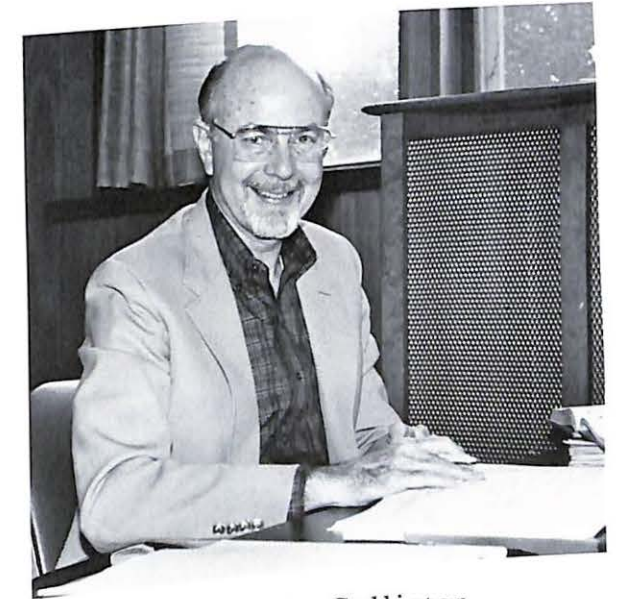
Mike Vande
Instructor



Steve Taft
Assistant Professor



Jane Bartlett
Assistant Professor



Robert McCallister
Professor



Marilyn Hinson
Assistant Professor



Susan Dittmer
Instructor



Giovanni Misceo
Assistant Professor

Social Science

Arts and Humanities



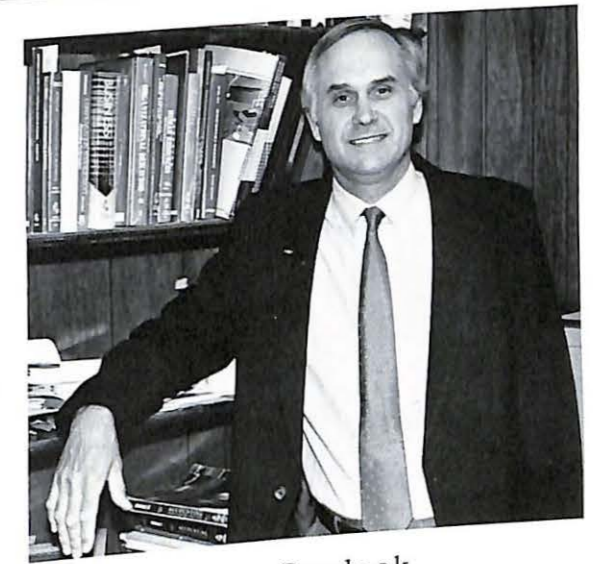
Business



John "Scotty" Campbell
Associate Professor



Gary Vazzana
Professor



Ron Pardeck
Assistant Professor



Carl Propes
Instructor



Larry Stockman
Instructor



Samira Hussein
Assistant Professor

Pat Vazzana
Associate Professor

Education



Gene Adkison
Assistant Professor



Dennis Ehlert
Assistant Professor



Robbie Ludy
Assistant Professor

Education



Marilyn Ehlert
Assistant Professor



Luann Wymore
Assistant Professor



Michael Doolan
Instructor



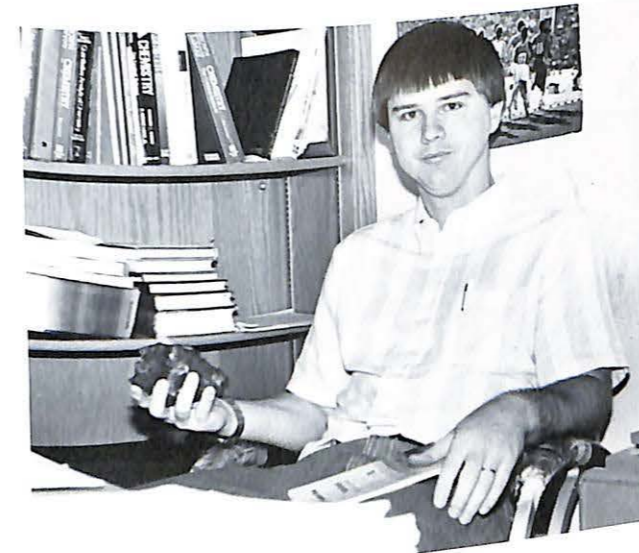
David Dautenhahn
Associate Professor



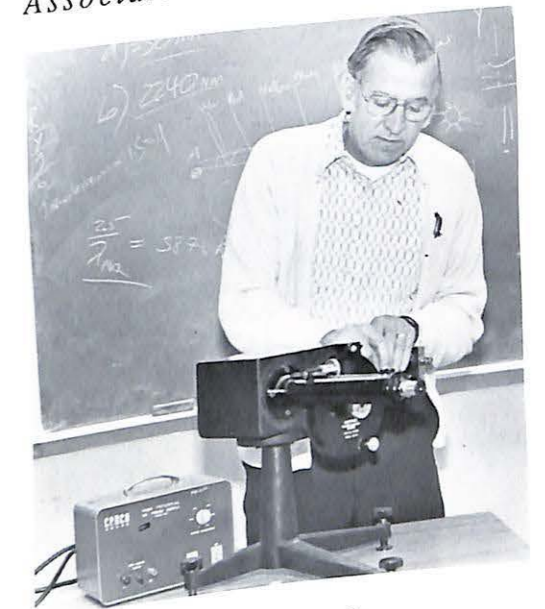
Irene Harris
Assistant Professor



Reed Kepner
Associate Professor



Kyle Guimon
Assistant Professor



John Gault
Professor



Ruthanne Harre
Associate Professor



Ed Leslie
Associate Professor

Math/Science



Physical Education



Ken Gibler
Associate Professor



Ron Givens
Coach



Jeff Steinle
Instructor



Greg Purdum
Instructor



Denny Fox
Assistant Professor



Vickie Gibler
Instructor



Carl Hutter
Coach



Jennie Rutledge
Instructor

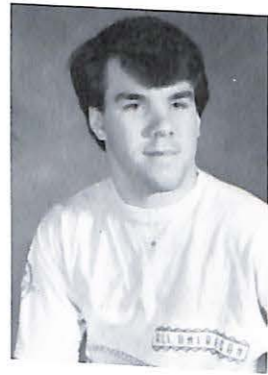
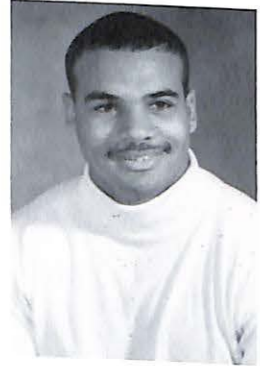


Dan Kratzer
Assistant Professor

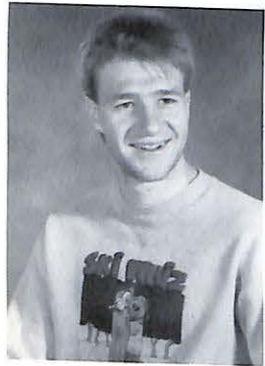
Freshmen



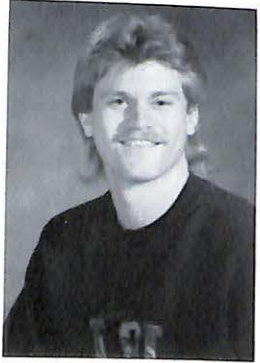
Ladonna Adams
Michael Ambrus



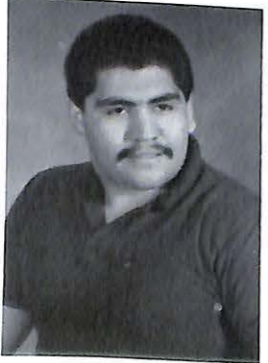
Cheryl Anderson
James Barber
Stuart Bayless
Celeste Blair



David Bower
Kathy Brandt
David Brant
John Brazzle



J.W. Brown
Richard Bryant
Corey Burns
Eileen Carey



Joseph Carey
Melinda Carey
Eddie Chavez
Sheryl Chrisco

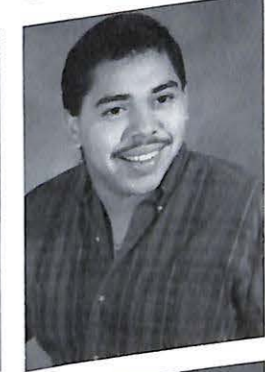
Student
Minds



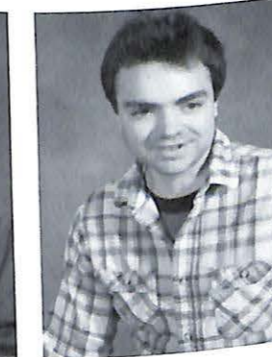
Ronnell Clay
Audrey Crisp



Joe Cullen
Tamala Darris
Kathryn Davis
Darbin DeWitt



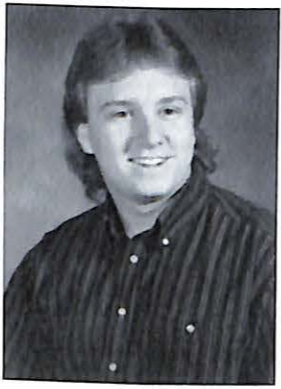
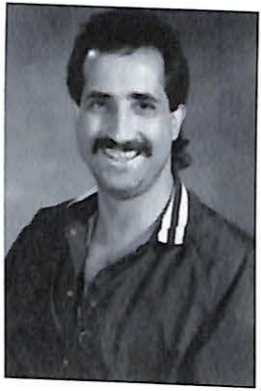
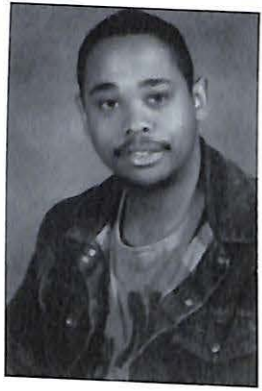
Johnny Dodge
Susan Ellis
Marc Emanuel
Ricky Espino



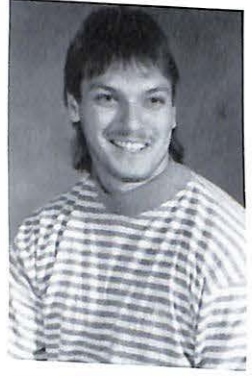
Chris Estill
Steve Estill
Martha Evans
Josh Farley



Jennifer Farris
Nick Fasnacht
Zane Fisher
Kimberly Folk



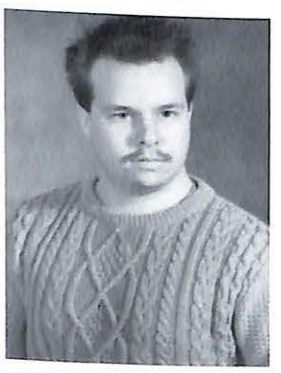
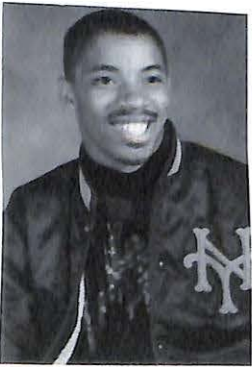
Johnna Fosnow
William Gaines
Tom Galetti
Steve Gantner



Michael Goodin
Dana Gottman
Cheryl Grimwood
Christopher Hadley



Terri Hayden
Ron Heather
Jill Hendren
Tamatha
Hennessey



Aaron Hill
Charles Hockaday
Linny Houston
Nathaniel Hurst



Robin Inman
Belynda Jasper
Theodore Jebens
Christina Jones



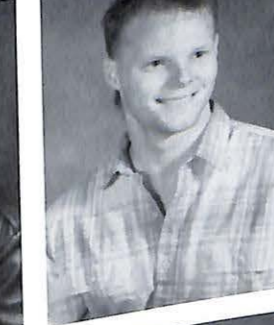
Eugene Jones
Robert Jones
Douglas King
Dawn Kirk



Nancy Knapp
Renee Krewson
William Lahm
Chip Landreth



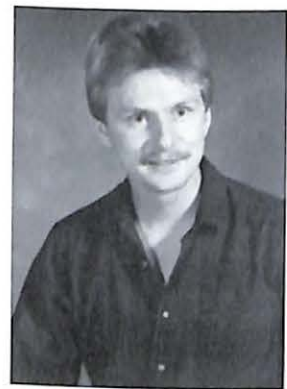
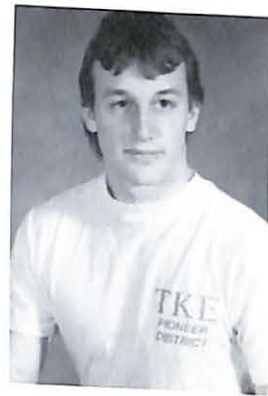
Carrie Lawn
Deborah Lawn
Cliff Lawson
Michael
Leonberger



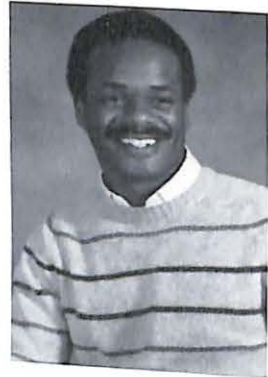
Tyra Lowe
John Lue
Lance MacLaughlin
Larrie Mann



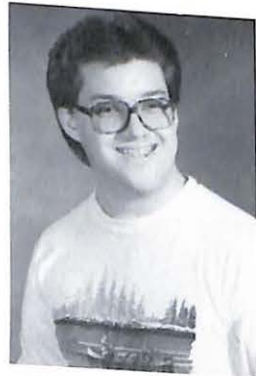
Craig Martin
Nancy McCloud
Melinda McGlothlin
Kevin McKinley



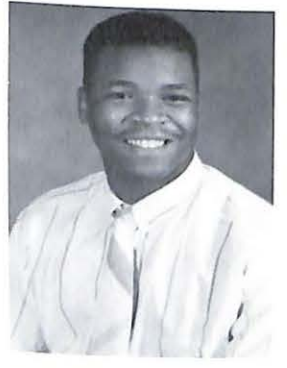
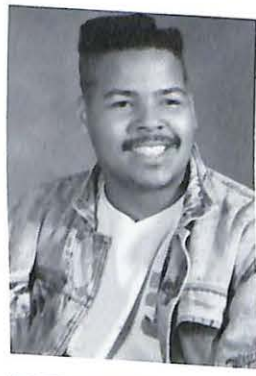
Cedric Merrick
 Darrell Moore
 Doug Morland
 Chuck Moter



Leigh Ann
 Moutray
 Michael Nance
 Jeff Nichols
 Robert Nicks



Timothy Norton
 Wayne Ogle
 David Otti
 Tiffany Pollard



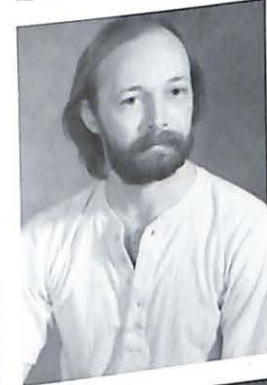
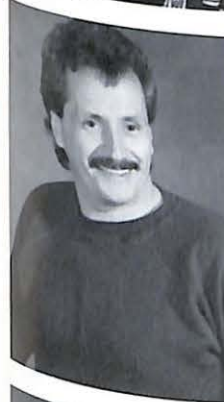
Caroline Ray
 Don Rhodes
 Marlese Rushing
 Dexter Sanders



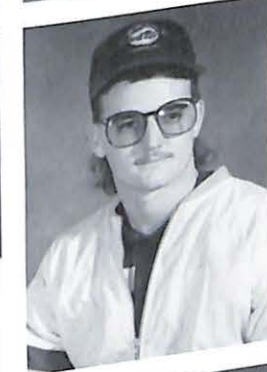
James Schmitz
 Alicia Sears
 Sandra Seaton
 Angelica Serrano



Heather Shaver
 Susan Sheetz
 Lisa Shifflett
 Kerwin Shockley



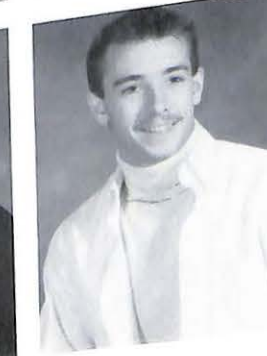
George Smith
 Victoria Smith
 Bill Stanley
 Jenni Stevens



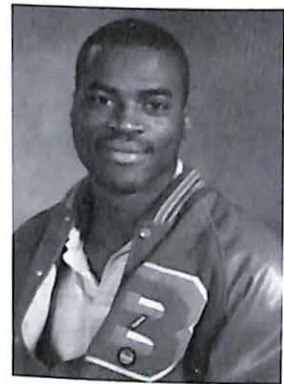
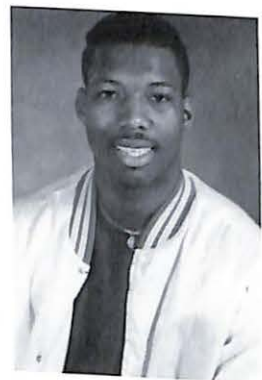
Scott Taylor
 Rhonda
 Teckemeyer
 Rob Tollerton
 William Tucker



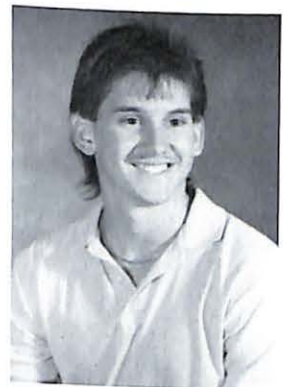
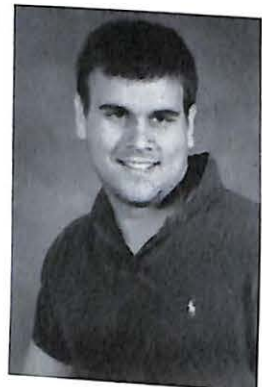
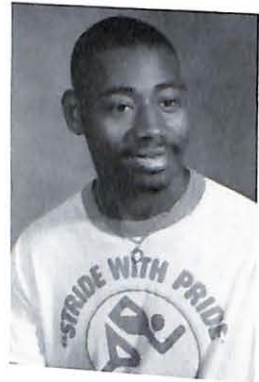
Cedric Vinson
 Marsha Wallen
 Cherlyn Wallmeier
 Jimmie Watkins



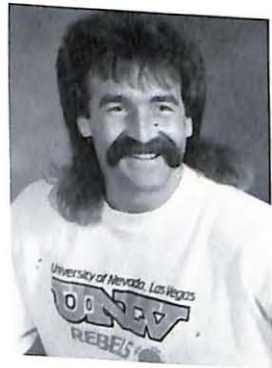
Jerry Weese
 Melissa Westfall
 Eric White
 Cornell Whiting



Cheryl Williams
 McKinley Williams
 Stephany Wilson
 Thomas Wilson



Charles Winfrey
 Eddie Wirthwein
 Gina Wood
 Eric Woodfine



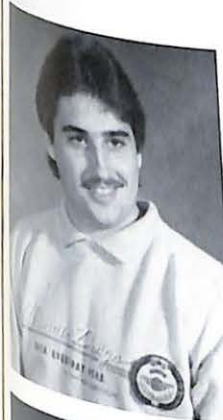
Bob Wotherspoon
 Debra Wunderlich



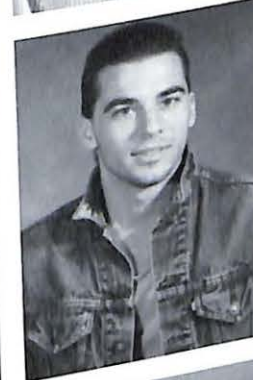
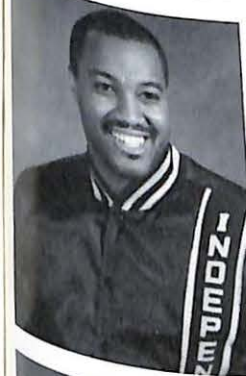
Sophomores



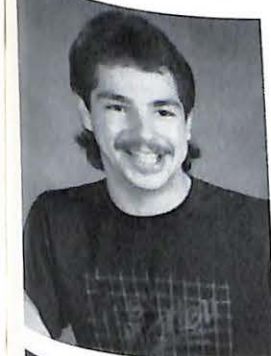
Vickye Allen
 Sydlo Arzt



Randy Barker
 Yolanda Beasley
 Mary Bender
 Tunisia Benson



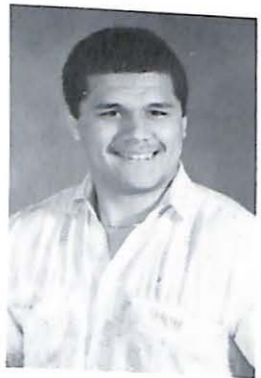
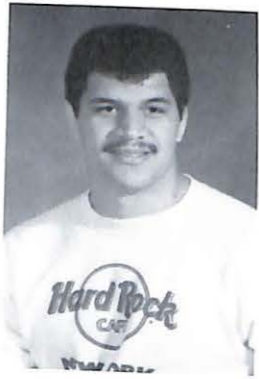
Duwan Black
 Anthony Blake
 Michael Blanton
 Anne Bollinger



Mike Bresnahan
 Ellen Burgess
 Kim Camp-Faucz
 Sam Coker



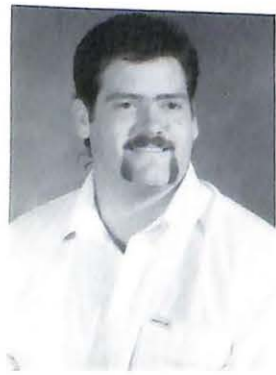
Curtis Cunningham
 Charles Day
 Paul Day
 Timothy Edwards



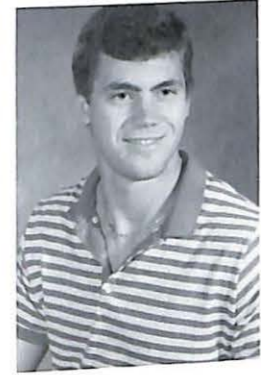
Marguerete Foster
Scott Fuimaono
Tuli Fuimaono
Jenny
Gruenenfelder



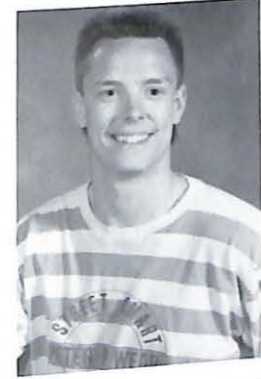
Beverly
Hammonds
Alicia Hansen
John Hartzell
Becky Hazelwood



Mike Hedrick
Bethany Helmich
Jennifer Hight
Becky Hutson



Susie Jones
David Kemm
Phil Kendall
Kelly Kidd



Terri Lansing
Joy Maberry
Brian McCollum
John McGraw



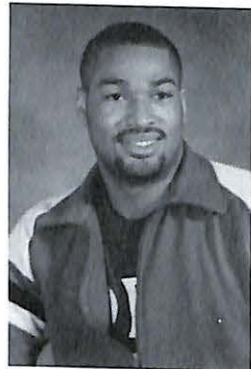
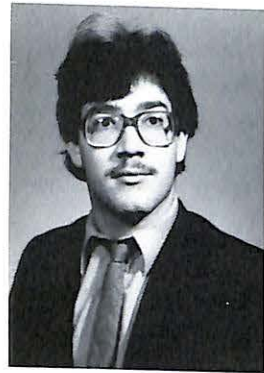
Mary Miller
Kelly Moore
Todd Moore
Sharon Morrow



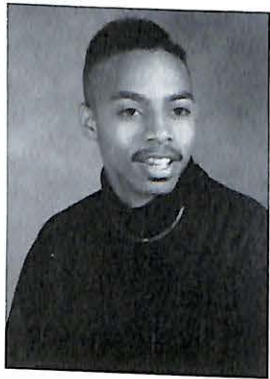
Jamie Murphy
Kelly Murphy
Katie O'Dowd
Scott Obermoeller



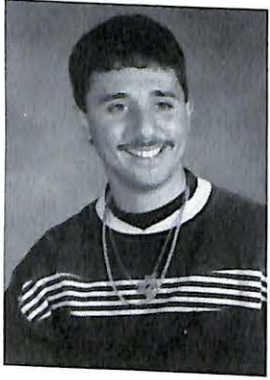
Willie Owens
Troy Popplewell
Amy Richardson
Tricia Schneider



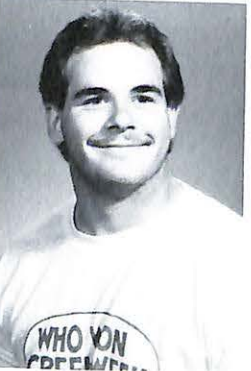
Scott Sievers
Bruce Simpson
Nick Steffen
Vicki Stragliati



Amy Swiger
Steve Symes
Tracy Tettaton
Andrew Thomas



Sally Thomas
Alesia Thurston
Calvin Tramble
Al Tusa



Karen Van Well
Todd Vaughn
Karen Walter
Doug Watson

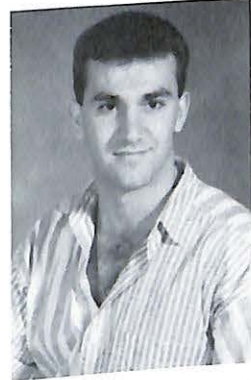
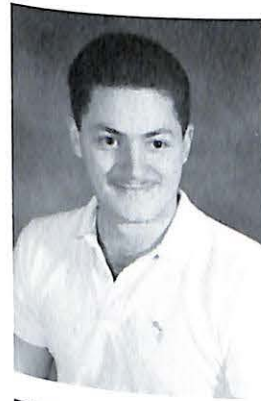


Nate Whitney
Angela Williams
Earl Winfrey
Cinda Wise

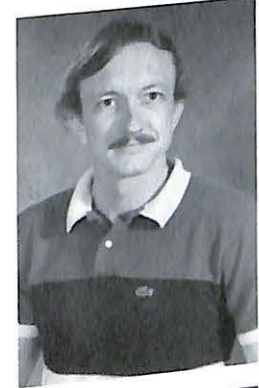
Juniors



Pam Adams
Lisa Anderson



Richard Anderson
Carole Dawn
Arrendale
Sheila Barrios
Jasper Bianco



Russell Bonen
Lisa Boone
Larry Bradshaw
Missa Brown

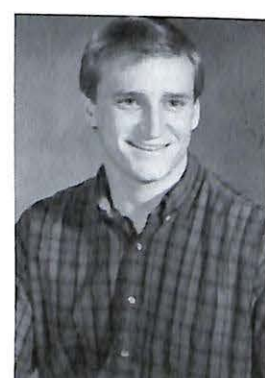


Charles Carter
Dave Caspermeyer
Carolyn Cesar
Kris Clemens

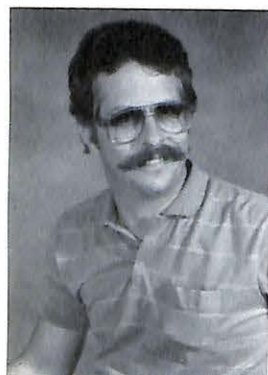




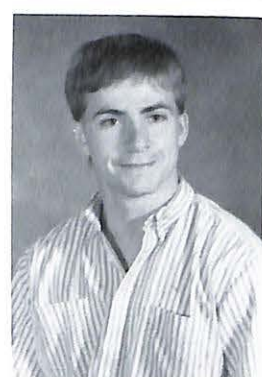
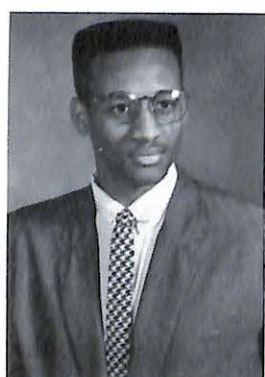
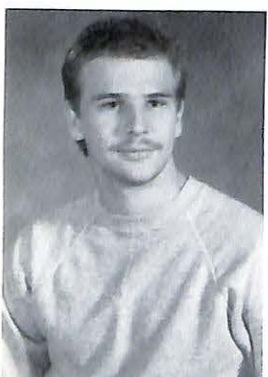
Beth Crook
Carol Dillon
Rhonda Dodson



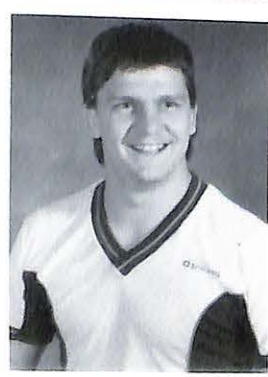
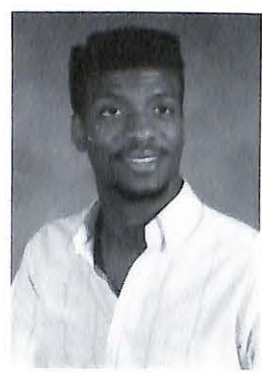
Jackie Downing
Brad Drehle
Megan Duchinsky
Stephanie Duncan



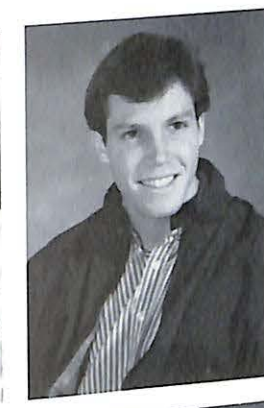
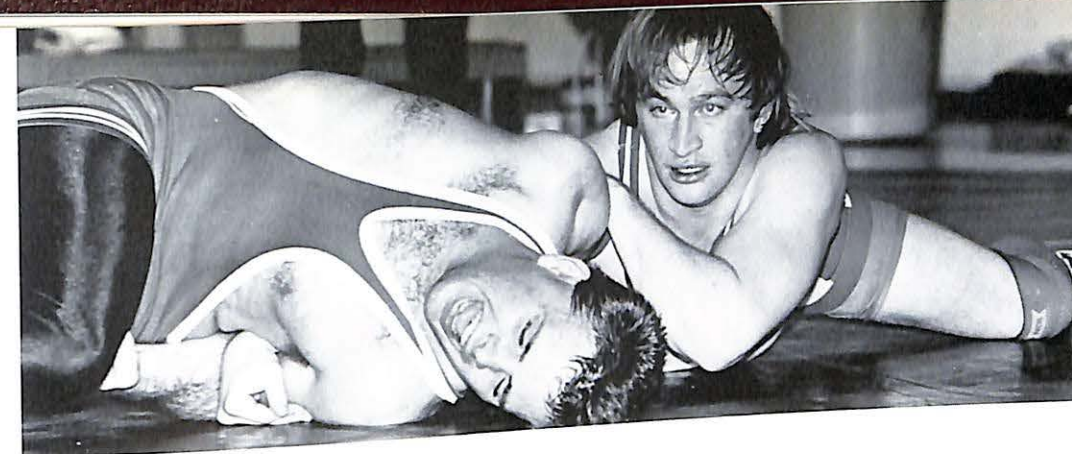
Bob Enderle
Armando
Espinoza
Gigi Goesling
Tara Goslik



Brian Gregory
Allen Hundley
Randy Hutchison
Robert Jacobs



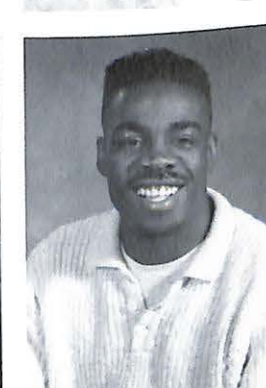
Didier
Jean-Baptiste
Greg Jones
Steve Jones
Jeff Keiser



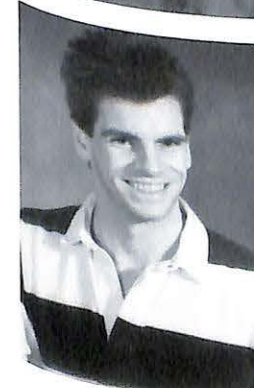
Evelyn Kerby
Bill Koch
Tom Kroenung
Bev Lamke



Fred Lepper
Christina Levin
Dana Markey
Paula Kaye Martin



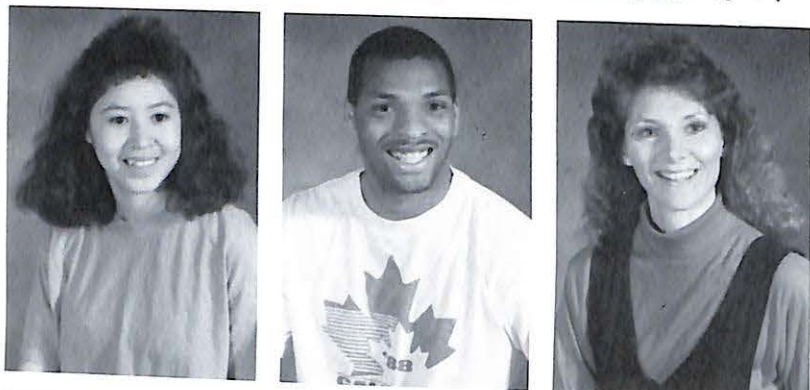
Terence McCoy
Ray McIntosh
D'Arcy Miller
Janet Moore



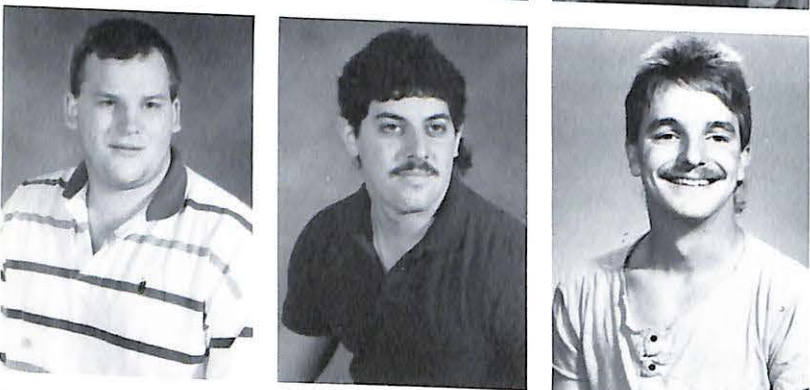
Robert Mott
Kathleen Murray
Becky Palmer
Jeanna Patton



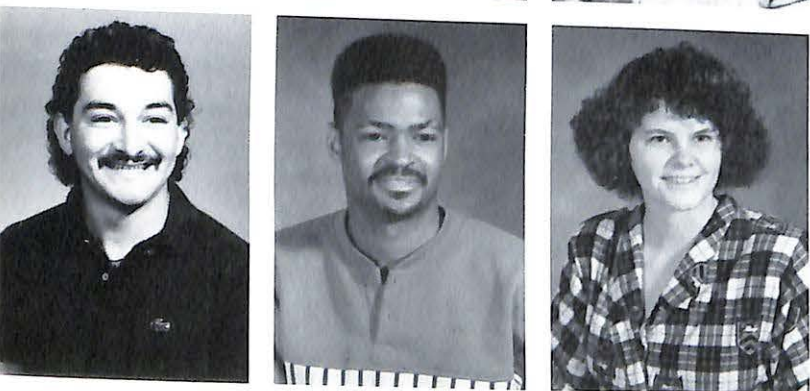
Gary Pennock
Kelly Pinkston
Mike Polk



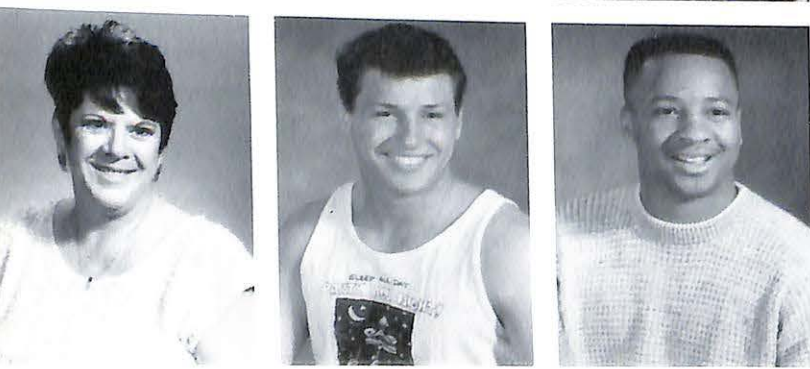
Sharon Polk
Steve Polk
Barbara Purdum
Tonya Raines



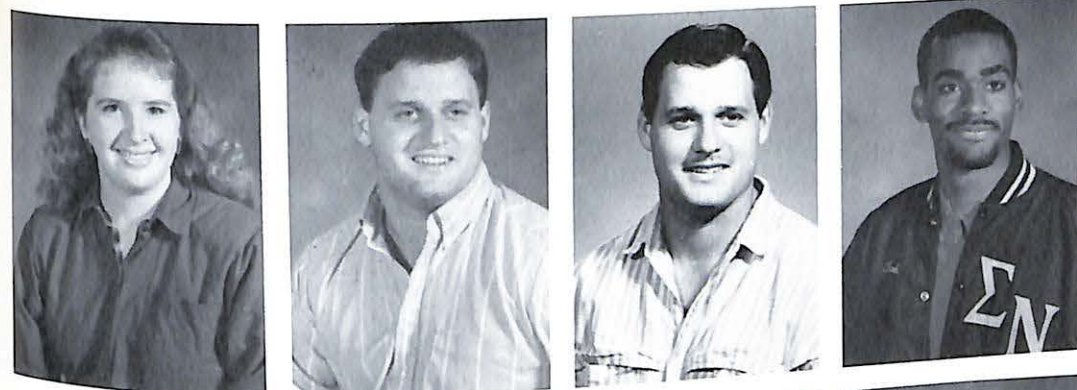
Sam Richardson
Steve Ross
Toby Sallee
Felicia Santana



Marty Saucedo
Chris Sealy
LuAnn Sherbeck
Revell Sherman



Sandy Sillers
Keith Sims
Tarey Slaughter
Bill Stephenson



Shana Stillings
Gary Taylor
Larry Taylor
Todd Thurston



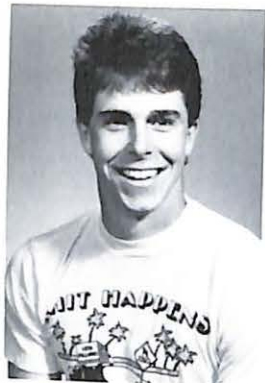
Claude Tolbert
Donna Walker
John Walters
Michael Ward



Phebe Washington
Nancy Weeks
Bobby Wehrle
Roderick Williams



Seniors



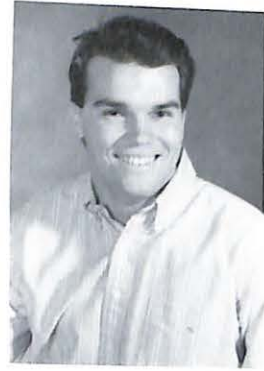
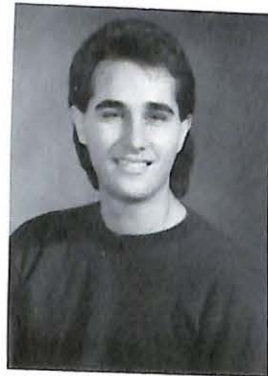
Jerry Albin
Will Averitt



Lisa Barr
Janet Bryan
Sarah Bryson
Barbara Burley



Pam Cumpton
Debra Dirksen
Greg Elsenrath
Kathleen Enright



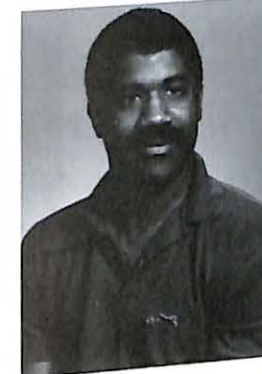
Darin Fair
Anthony Gianino
Carlos Guimbarda
Pam Hall



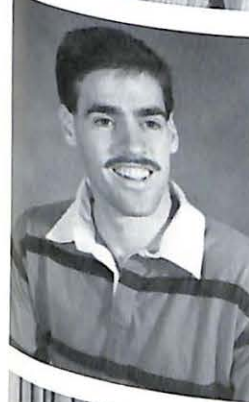
James Hillestad
Thomas Hillestad
Lovie Hood
Kathy Howery



Sharon Huff
Billy Hutchinson
Ron Jenkins
Tracey Johnson



Lynn Laudel
Debbie Lock
Marc Lowe
Kevin Maroney



Maurice Mitchell
Perry Morrow
Timothy Newman
Bobbie Niles



Rhonda Peery
Peter Roberts
Aline Roy
Billy Rutledge



Nikki Saale
Ginger Sallee
Pam Shepard
Linda Singleton



Jay Stevens
Darrel Stogsdill
Karen Sullivan
Scott Tomc



Connie Usnick
Connie Vaught
William Watts
Doug Winters



Pam Workman

**Graduates -
No pictures**

John Adair
Deanna Arni
Susan Artkras
Michele Baldwin
Rosalind Barnes
Joyce Blunk
Michael Bradshaw
Scott Buckley
Rodney Buford
Laura Burke
Rex Cantlin
Robert Casey
Sarah Chamberlin
Christopher Damron
Delmar Daum
Pamela Davis
Gary Donaldson
Aaron Evans

Matthew Feeback
Randy Fields
Michael Gillespie
Kristy Goetting
Christine Gorman
Debra Gunn
Rosemary Hardin
Bryan Hargiss
Charles Hartung
William Haymaker
Sharon Huff
Todd Johnson
Clifton Jones
Vicki Kays
Kimberly Kimberling
Paul Lashley
Thomas Ledbetter
Laura Lehman

Bruce Leimkuehler
Betty Mikels
Robert Mitcham
Steven Mitchell
Monica Morgan
Kyle Naylor
Daniel Noble
Matthew Norton
Michael Novak
Murphy Panuelo
Walter Peery
Kevin Pryer
Stanley Ringeisen
Barb Sassenrath
Amy Schroeder
Thomas Sheppard
Gerald Shimon
Brian Simmons

Susan Smead
Darren Smith
John Snyder
Kyle Spencer
Angela Squires
Jeff Strickler
Phillip Sullivan
William Teller
Richard Thompson
John Tipton
Janette Tobie
John Watson
Bethany Weiker
Lory Weinreich
Barbara White
Matthew Wolf
Brian Woodfine



From left: honorees (L-R) Sally Campbell, Connie Vaught and Carol Williams; Carol Pember-ton introduces Mrs. Campbell; Campbell, ad-visor for AZD, is con-gratulated by (L-R) Karen Walter, Debbie Lawn, Angelica Serrano, Tracey Johnson and Amy Richardson; Rita Ludwig presents Vaught.



**Women's Hall
of Fame Tea**

Honored at this year's Women's Hall of Fame Tea were Sally Campbell, Connie Vaught and Carol Williams.

Campbell, presented by friend Carole Pember-ton, was the 16th in-ductee to the Women's Hall of Fame.

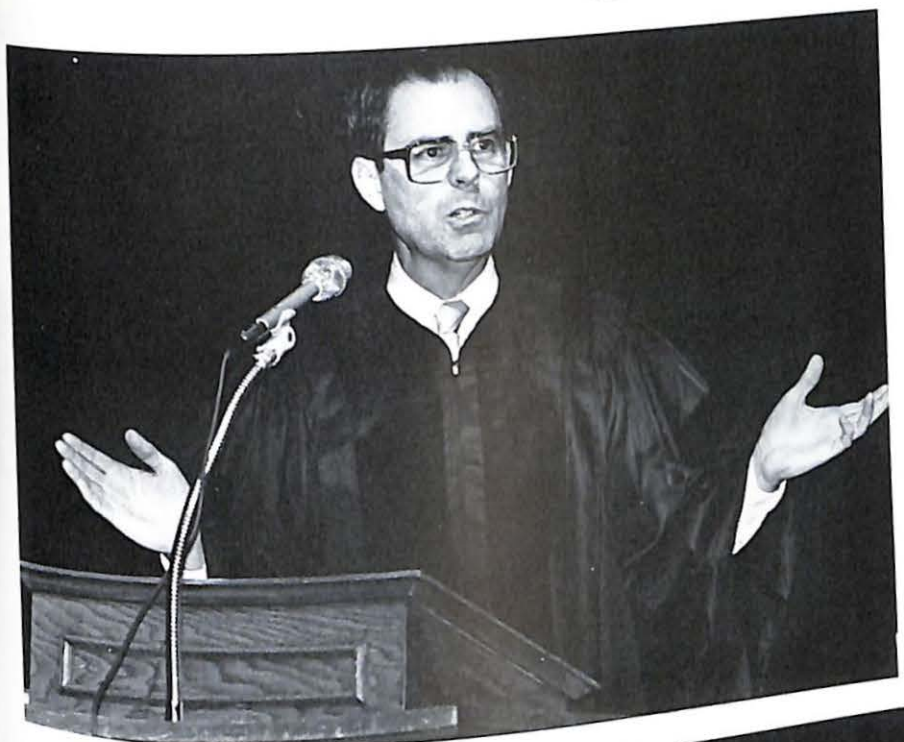
Vaught, daughter of Gayle McKinney and presented by Rita Ludwig, was named Out-standing Senior Woman.

Williams, an educa-tion major, earned the Valley Dames Scholar-ship Award, presented by Marilyn Ehlert.



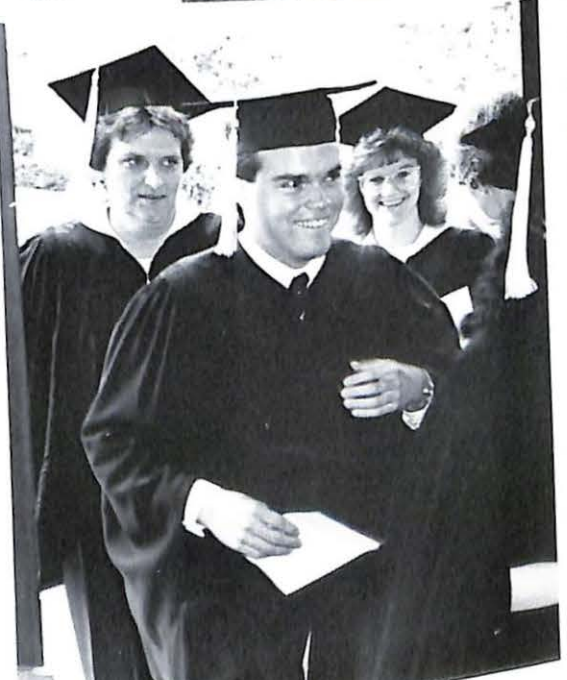
Baccalaureate services

From left: Dan Kratzer and his son Reggie pedal along the Marshall 150th birthday parade route; ASA took a ride to say, "Have a good one, Marshall"; (L-R) John McCallum was honored at the Alumni Banquet as honorary alumnus, and Solomon Wronker ('15) and John Ashford ('71) were outstanding alumni; MVC's parade entry; McCallum accepts the alumni honor.



May 14, graduation day, began with Baccalaureate Services and speaker Dr. John L. Williams, synod executive, Synod of Mid-America. Mabee Chapel was filled to capacity as Randy Fields opened services with the invocation and President Reeves greeted graduates, faculty and family. Sarah Bryson provided the scripture and Connie Vaught the benediction.

Alumni weekend honors grads, faculty



From left: Carlos Guimbarda enters Mabee Chapel; the line forms to enter a full chapel; speaker Dr. John L. Williams; Connie Vaught gives the benediction; parents line up sons and daughters for pictures after the service.



Send in the graduates

Many times this day, graduates were reminded that graduation is not only an end, but a beginning; the beginning of a new educational process, and of professional lives.

Graduating senior Kevin Maroney spoke for the class, extending the simple idea, "Do the best with what you have," and "Be your own philosopher and think for yourself."

Secretary of State Roy Blunt provided the graduation address, reminding students that in years to come their educations will become very important.

"More than half of the new jobs in the next 10 years will require post-secondary education," he said.

Noting that some of America's resources are limited or running out, Blunt later added, "The only expandable resource is the minds of Missourians."

The Charles L. Bacon Distinguished Service Award went to Darrel Stogsdill, a member of the business club, basketball team and choir.

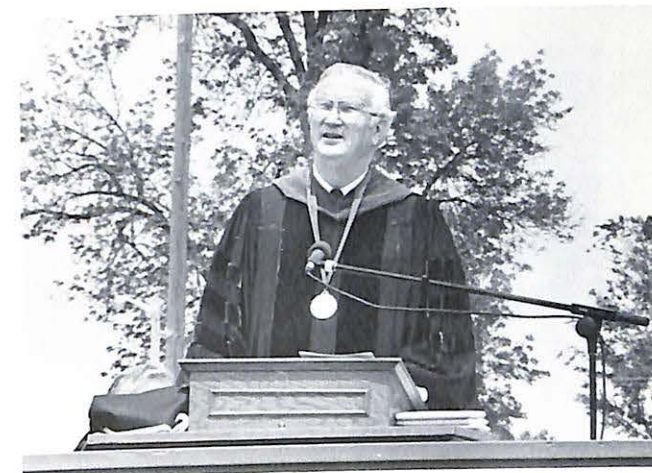
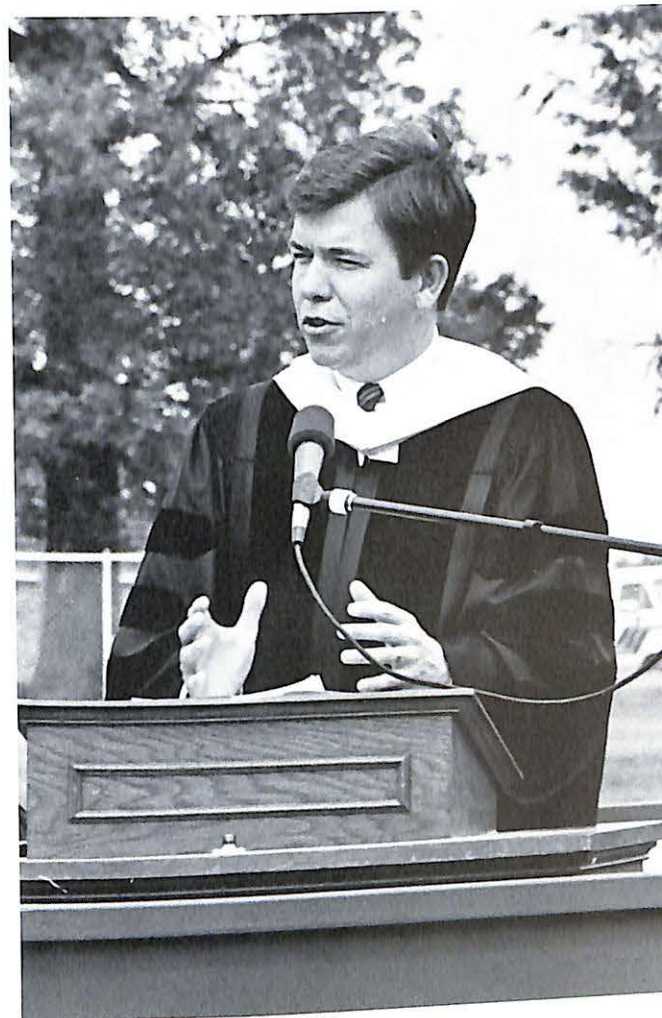
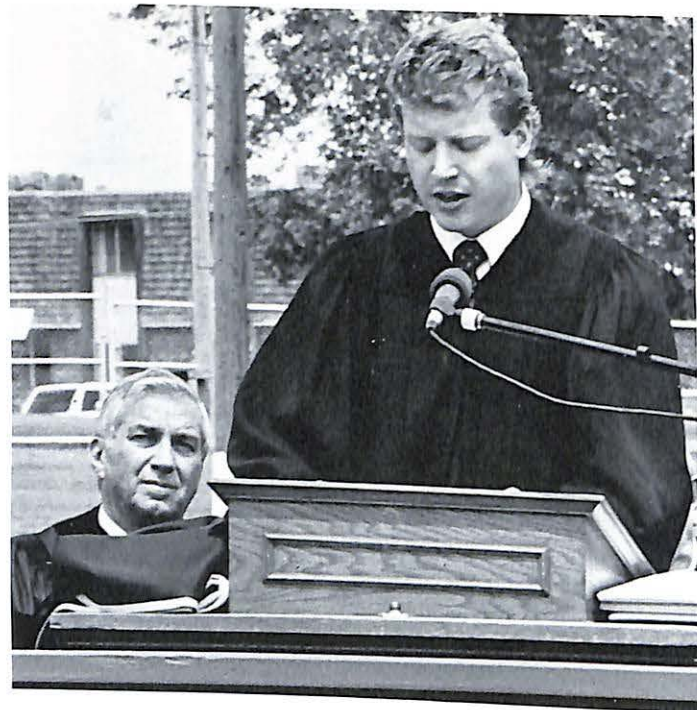


Top: The Class of 1989.

Opposite page: The American Humanities band provided "Pomp and Circumstance" to the event.

Above and right: the grads work their way to Gregg-Mitchell Field.





From left: Darrel Stogsdill, Matt Norton, Jodi Arni and Connie Vaught provide a musical selection; Kevin Maroney makes the senior greetings; William B. Miller was presented an honorary Doctor of Humanities; Charlie Hartung can't believe he's graduating; Stogsdill receives the Charles L. Bacon Distinguished Service Award.



From left: Scott Buckley receives his degree from Dr. Rabe; Roy Blunt gives the commencement address; President Reeves welcomes the parents, relatives and friends of the Class of '89; Aaron Evans gets a personal congratulations.



Graduating
Minds

An end...



Left: Revell Sherman says, "Way to go"; Chris Roberts is greeted with a big hug; anticipation mounts; a final wave.



...and a beginning

